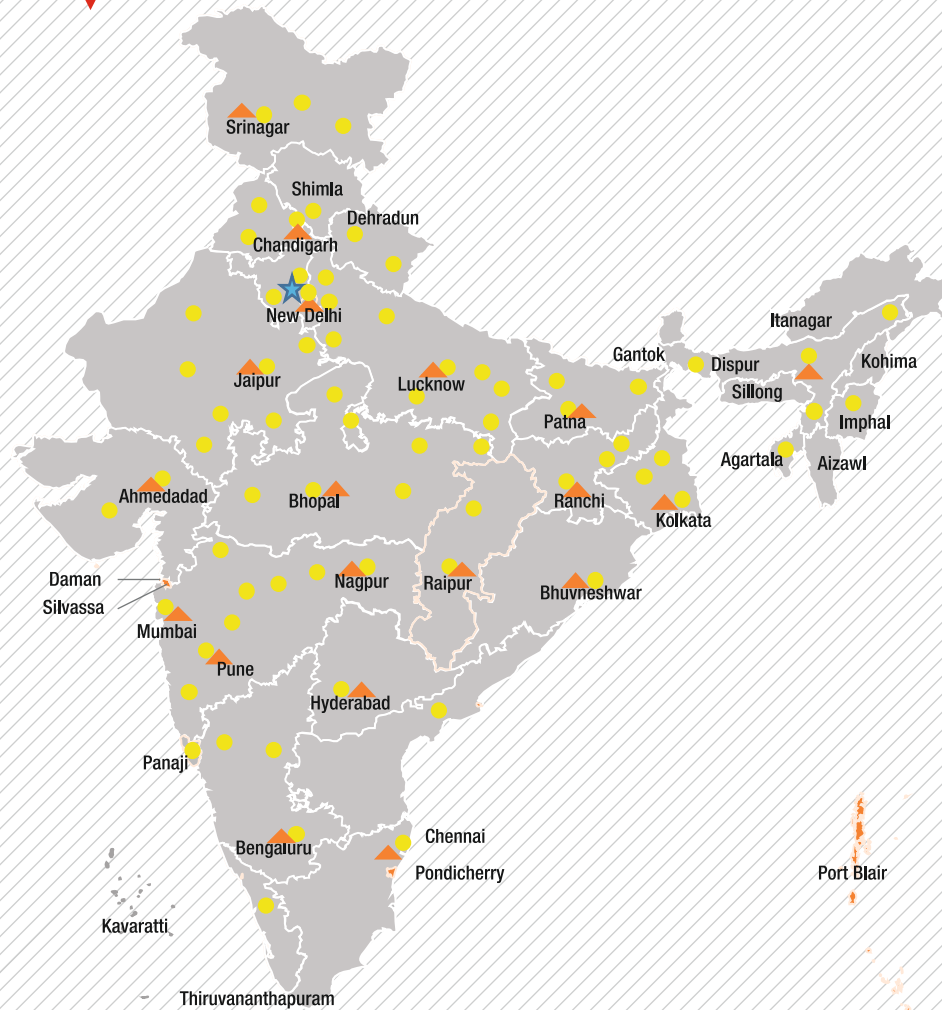


TRX 2319

OUR REACH



★ Head Office | ▲ 17 Business Center | ● 73 Dealers | 825+ Customer Touch points (CTP)



Toll Free No.:
1800-180-4488
(Timings: 9.30 am - 6.00 pm, Monday to Friday)

e-mail: ekl_g.ece.marketing@escortskubota.com

Escorts Kubota Limited (Construction Equipment)
Plot No. 219, Sector- 58, Ballabhgarh- 121 004, Faridabad, Haryana (INDIA)
Tel.: 0129-2306574/2306598/2306571
Fax: 0129-2306572 **Website:** www.escortsgroup.com



GET IT ON
Google Play
Download Customer App
for more details

Authorised Dealer

• The information contained in this leaflet is intended to be of a general nature only. • We reserve the right to changed specifications without notice. • All Dimensions and weights are variable within +/-5%.

TRX 2319



Capacity
23 t



Boom Height
(with fly jib)
22.0 m



Equipment
Monitoring System
EMS



Creep Speed
1.3 km/h



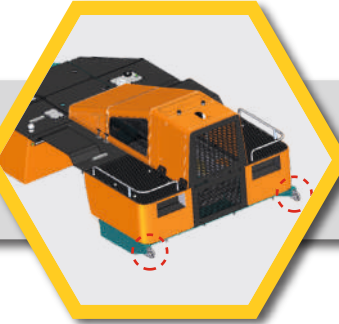
Stability
Better

*Photo may be change w.r.t actual

(Accessories as shown in the picture may not be the part of standard fitment and are subject to change without prior notice.)

MKT/24.08/TRX - 2319

FEATURES



TOWING HOOK FRONT & REAR

Towing hook at both front and rear ends. Specially designed for highway clearance purpose.

DRAG WINCH

Heavy duty robust dragging winch at front for dragging application with in built safety brakes.



ESCORTS

LED WORK LAMP

LED work lamp for night operation with high range visibility, 02 number work lamp available.



REAR WORK LAMP

Rear work lamp to ensure operation in night.



RHINO HOOK

Rhino hook at front can be used for pulling operation for max 5 ton load under fully retract boom condition.



TELEMATICS

TRX 30 comes with telematics as standard, which ensures 24X7 machine monitoring & alerts. Tracking, Alert on fuel, battery, coolant, temp, oil pressure & machine service reminder



FEATURES



HYDRAULIC CLUTCH

Low effort hydro pneumatic clutch to reduce operator fatigue.

ELECTRONIC ACCELERATOR PEDAL

Accelerator Pedal - Low effort electronic accelerator pedal reduce operator fatigue.



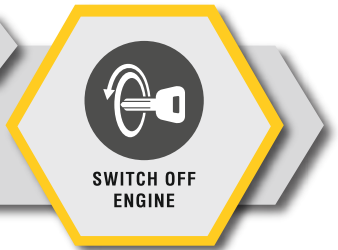
ECU EMS SYSTEM

ECU EMS – Electronic Control Unit for Engine Management System for Engine diagnosis and troubleshoot.



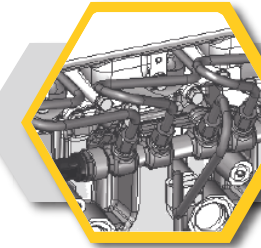
IGNITION ON/ OFF

Ignition key to switch off engine, no more use of stop cable to engine put off.



HPCR SYSTEM

HPCR – High Pressure Common Rail System - HPCR provide cleaner exhaust, deliver more horsepower and fuel efficiency per displacement.



ROCKER SWITCHES

Rocker Switch with more reliable and better aesthetic appearance, low operator fatigue.



CLUSTER

Single Digital Cluster with all gauges, fault code detection for engine system, date and time display feature, less number of wiring harness.



*Photo may be change w.r.t actual in equipment

SPECIFICATIONS

RATED CAPACITY

30 tonne	1.5 m radius
4.8 tonne	8.5 m radius
Max Hook Height	12.1 m

ENGINE (BS IV)

Volvo - Eicher make CEV BS IV Diesel Engine, Model E494TCI - High Pressure Common Rail System (HPCR) Technology, Turbo Charged Water Cooled, ECU Control Engine Management System, Developing 101 Kw/137HP @ 2200 RPM or Equivalent Engine.

TRANSMISSION & CLUTCH (HYDRAULIC)

Drive	Mechanical - 2WD (Rear Wheel Drive) with Hi/Lo
Type	VECV Synchromesh gearbox with Aux gearbox (6F + 1R)
Clutch	Dry Friction Plate
Speeds	12 forward and 2 reverse
Max Travel Speed	41 Km/h
Clutch Actuation	Pneumatic Assisted Hydraulic Clutch
Creep Speed	1.3 Km/h
Gradeability	35% (Unladen)

STEERING

Full Power orbital with twin Hydraulic double acting cylinders	
Type	Fixed Steering Column
Articulation	Up to 35° on either side
Turning Radius	8.5 m (min)

BRAKES

Service	
Rear Wheel	Air operated brakes on rear axle.
Front Wheel	Pneumatically assisted hydraulic brakes.
Parking	
Rear Wheel	Spring loaded brake, Air-released on rear axle.
Front Wheel	Pneumatically assisted Spring loaded, fail safe hydraulic actuated brakes on front axle.

TYRES

Front	12.00 X 24 - 20 PR (Four number)
Rear	17.5 X 25 - 20 PR (Two number)

TRACK

Front	2 150 mm (Center of twin wheels)
Rear	2 000 mm (Center of wheel)
Wheel Base	4 800 mm

AXLES

Front	Fabricated with front frame
Rear	Drive axle, mounted on semi elliptical leaf springs

BOOM

Telescoping	4 parts boom 3 parts hydraulically powered & fully synchronized. 4th part power extended & manually pinned for safety (Use 6 falls when mechanical extension is retracted) (Use 4 falls when mechanical extension is extended)
-------------	---

Derricking Through double acting jacks

- Maximum Load Lifting Capacity 23t
- Maximum Boom Height 19 m/ 22 m with fly jib
- Maximum Horizontal Reach 16.6 m
- 12t can be lifted to an under hook height of 11.7 m
- 8t can be lifted to an under hook height of 14.8 m
- Telescope capacity (Laden) off snatch block - 9t

HOIST MECHANISM

Hoist	Hydraulic winch. Six / four falls.
	Rope dia 13 mm

HYDRAULIC SYSTEM

Tandem vane pump - Craning	: 46 CC
Steering pump - Steering	: 26.4 CC

CONTROL VALVE

- Proportional control valve hydraulically actuated through joy stick 3 spool double acting with a built in relief and auxilary valves.
- 2 spool double acting control valve for outrigger operation.

ELECTRICAL SYSTEM

24V, DC, Negative earth

OPERATING WEIGHT (Travel)

18870 kg

AXLE LOADING (Travel)

Rear Axle	10 770 kg
Front Axle	8 120 kg

OVERALL DIMENSIONS

Height	3 100 mm
Width	2 840 mm
Length	11 450 mm

SAFETY SYSTEM

- Safe Load Indicator with Hydraulic cut off
- Safety Brakes on Hoist
- Hose Protection Failure Device
- Rope Compensating Snatch block
- Equipment Monitoring System
- Rear view Camera With LCD,
- Battery cut off Switch

STANDARD ACCESSORIES

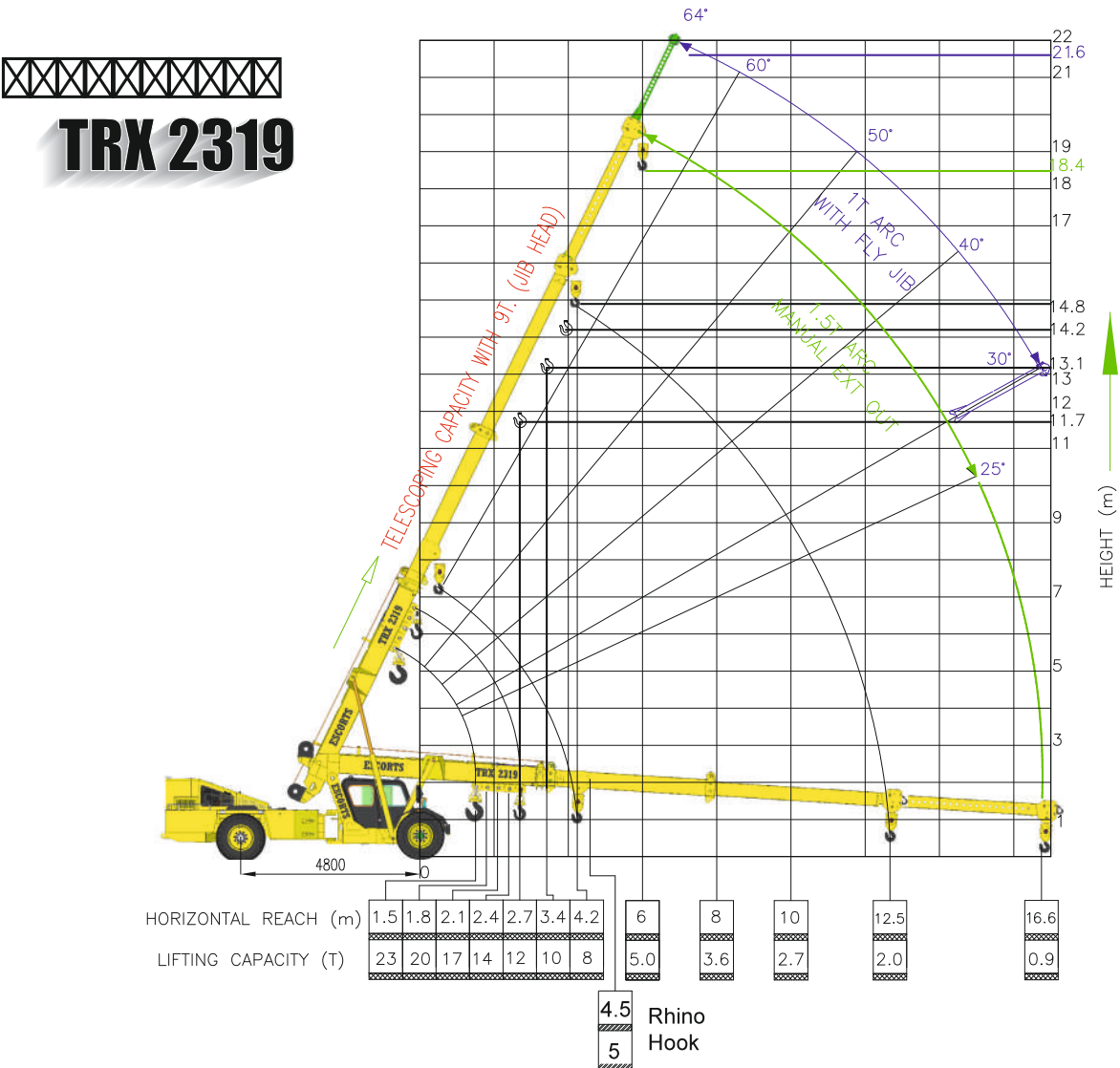
- All Weather Cabin
- Mobile Charger
- Rear View Mirror
- Turn & Reverse lamp
- Fly Jib
- Rhino Hook
- Tyre Guard

OPTIONAL ACCESSORIES

- Fire Extinguisher

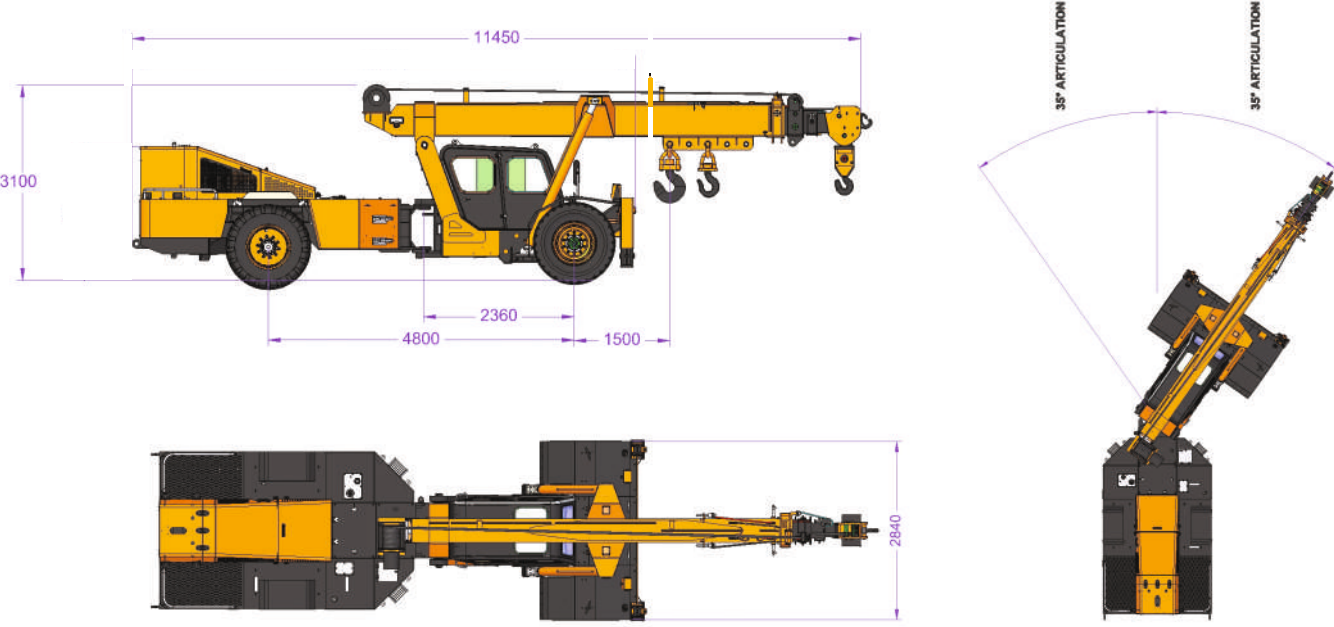
- Tyres to be inflated with recommended air pressure
 - Front tyres (Dual) - 7 bar (Air Pressure)
 - Rear tyres (Single) - 7 bar (Air Pressure)
- Travel speed with load (Creep) - Not to exceed 2 km/h
- Weight of chains, slings and tackles to be considered extra

TRX 2319



Rated loads are calculated for operation on leveled surface.

TRX 2319: DIMENSIONS (Ref.) & AREA OF OPERATION



NOTES

TRX 2319

TRX 2319

