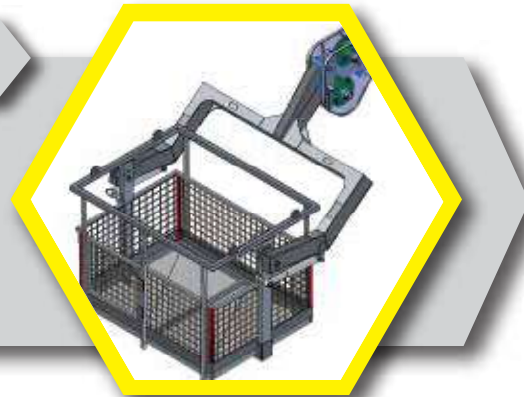


ACCESSORIES

MAN CARRYING BASKET

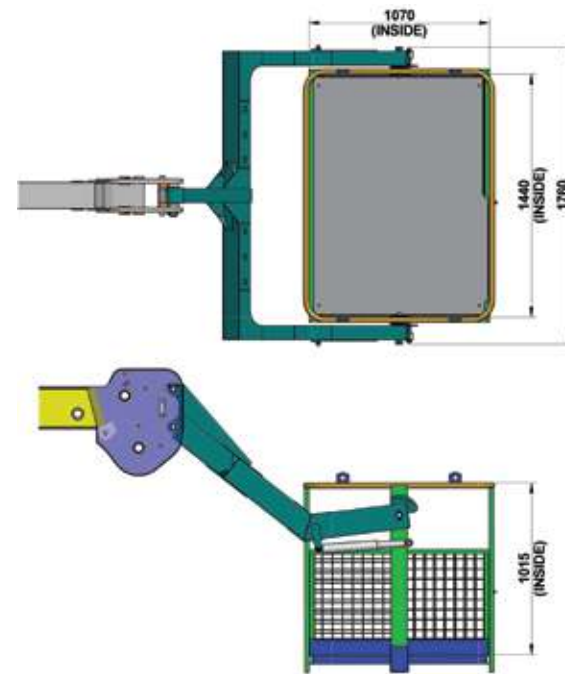
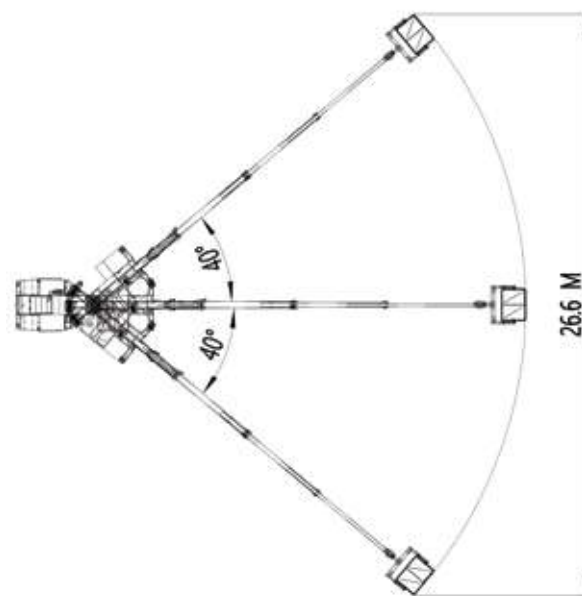
ATTACHMENT SPECIFICATION		
ATTACHMENT WEIGHT	KG	240
MAX. CAPACITY	KG	235
NO. OF PERSONS.	N°	2
PLATFORM LENGTH	mm	1440
PLATFORM WIDTH	mm	1070

Intended use
The machine has been designed to lift people and handle small tool, max load 235 kg or 2 persons



BE CAREFUL!

When in the firm the same machine is to be used by more than one operator, working instructions as well as the use and maintenance manual must be conveyed to all the operators in charge of the machine.



ATTACHMENT DIMENSIONS

(Accessories as shown in the picture may not be the part of standard fitment and are subject to change without prior notice.)

MKT23.1/TRX 15



Toll Free No.:
1800-180-4488
(Timings: 9.30 am - 6.00 pm, Monday to Friday)

Escorts Kubota Limited (Construction Equipment)
Plot No. 219, Sector- 58, Ballabhgarh- 121 004, Faridabad, Haryana (INDIA)
Tel.: 0129-2306574/2306598/2306571
Fax: 0129-2306572 Website: www.escortsgroup.com

e-mail: ekl_g.ece.marketing@escortskubota.com



GET IT ON
Google Play
Download Customer App
for more details

Authorised Dealer

TRX 15



Capacity
15 T



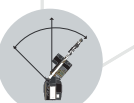
Boom Height
(With Fly Jib)
21 M



Clutch
Hydraulic



Creep Speed
1.3 kmph



Articulation
Lowest



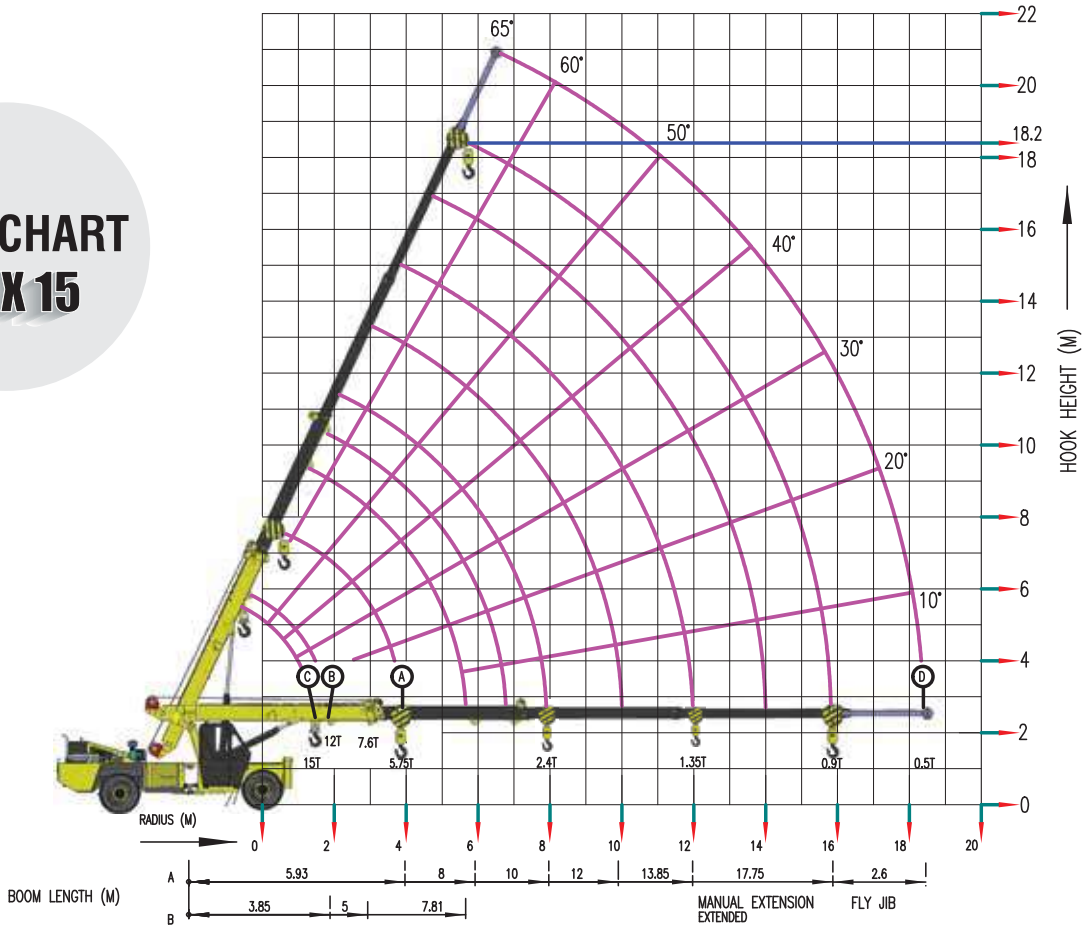
SPECIFICATIONS

- RATED CAPACITY**
15 Tonnes at 1.50 m radius
900 kg at 15.80 m radius
Max Height 18.20 m
- VEHICLE PERFORMANCE**
Speed Max 41 kmph
Gradeability 40% unladen
Creep Speed 1.3 kmph
- DRIVE**
4 Wheel Drive
- ENGINE (BS IV)**
Diesel Engine of TATA MOTORS make, Model 497 TC,
Turbo charged water cooled, developing 76Ps/55KW@2200
RPM or Equivalent Engine
- TRANSMISSION & CLUTCH**
Synchromesh Transmission Gearbox of TATA MOTORS
make with Auxiliary Gearbox.
Speeds 10 forward and 2 reverse
Clutch Single, dry type friction clutch plate
- BRAKES**
Service Fully air operated 'S' cam dual circuit
brakes on front & rear axles.
Parking Air operated, spring actuated fail safe
brakes on front and rear axles
- AXLE**
Front Rigidly Mounted
Rear Mounted with two semi-elliptical springs
Make TATA
- TYRES**
Total 8 number 11x20-16 PR
- HYDRAULIC SYSTEM**
Main pump of 46 cc/rev
Control Valve-6 spool double acting with a built in
relief & auxiliary valve
- ELECTRICAL SYSTEM**
12 V, DC, Negative Earth
120 AH Batery for longer life

- STEERING**
Full Power orbitrol with twin hydraulic double
acting rams 40° articulation on either side
- BOOM**
4 Parts boom, 3 Parts hydraulically powered &
fully synchronized 4th part power extended and
manually pinned for safety.
Luffing Range -10° to + 65°
- HOIST**
Hydraulically operated winch with max line speed
50m/min Built in safety brakes
- DIMENSIONS**
Wheel Base 3950 mm
Overall Length 10075 mm
Overall Width 2450 mm
Overall Height 3215 mm
- WHEEL TRACK**
Front 1810 mm
Rear 1810 mm
- OPERATING WEIGHT**
4 WD
Front Axle 6455 kg
Rear Axle 10190 kg
Total 16645 kg
- TURNING RADIUS**
7.2 m
- STANDARD ACCESSORIES**
 - Outriggers
 - Tyre Guard
 - Fly Jib
 - Battery Cut off Switch
 - Reverse camera
- OPTIONAL ACCESSORIES**
RHINO Hook
Fire Extinguisher
Helper Seat with Platform
Man Carrying Basket
Equipment Monitoring System (Telematics)
Safe Load Indicator with Hydraulic Cutoff

TRX 15

LOAD CHART
TRX 15



A						
RADIUS (M)	BOOM LENGTH IN METRES – MANUAL EXTENSION RETRACTED					MANUAL EXTENSION EXTENDED
	5.93	8	10	12	13.85	17.75
	2	7500	7500	7500		
3	7500	7500	6900	5200		
4	5750	5700	5070	4500	3970	
5		4400	4760	4000	3460	1680
6		3600	3525	3475	3100	1575
7			2900	2900	2750	1475
8			2400	2478	2400	1400
9				2130	2080	1320
10					1775	1250
11					1550	1180
12					1350	1135
13						1100
16						900
18						

B			
BOOM PIVOT TO INNER LUG 1ST JIB EXTN. MANUAL EXTN. RETRACTED			
3.85	5	6	7.81
12000	11000	11000	10550
	7000	7000	6700
		4800	4750
			3570

C	
15 LUG	
BOOM FULLY RETRACTED	
RADIUS (M)	S.W.L (KG)
1.5	15000

D FLY JIB(BOOM FULLY EXTENDED)
750
750
700
700
600
650
600
500

- * RADIUS IS THE HORIZONTAL DISTANCE MEASURED FROM THE CENTRE OF FRONT WHEEL TO THE LOAD POINT
- * S.W.L ARE BASED ON 85% STABILITY & STRENGTH
- * S.W.L ARE BASED ON FIRM LEVEL GROUND WITH TYRES 11X20-16 PLY INFLATED TO 115 PSI,WEIGHT OF HOOKS, BLOCKS, SLINGS & CHAIN ETC. INCLUDED.
- * LIFT & CARRY - THE S.W.L. SHALL BE CARRIED WITH THE MINIMUM BOOM LENGTH & AS CLOSE TO THE GROUND AS POSSIBLE AT SPEEDS NOT IN EXCESS OF 2 KMPH.
- * BOOM HEAD MOUNTED RHINO HOOK CAPACITY-6000 KG

Rated loads are calculated for operation on leveled surface.

TRX15 DIMENSIONS (Ref.) & AREA OF OPERATION

