



# ESCORTS RT 30

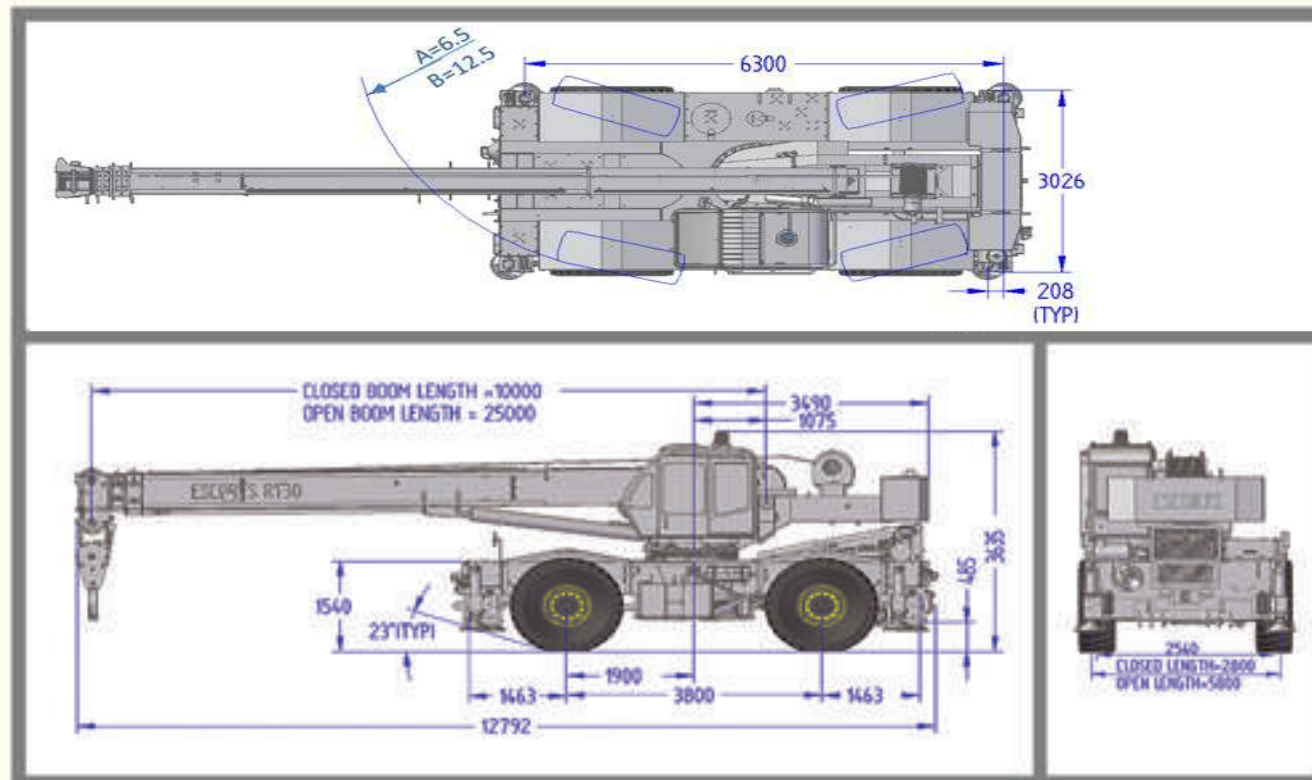
Rough Terrain  
Hydraulic Mobile Crane

## Permissible Hoist Line Load in Kg

No. of part line	1	2	3	4	5	6	7	8
Main winch Hook Load	4000	8000	12000	16000	20000	24000	28000	32000

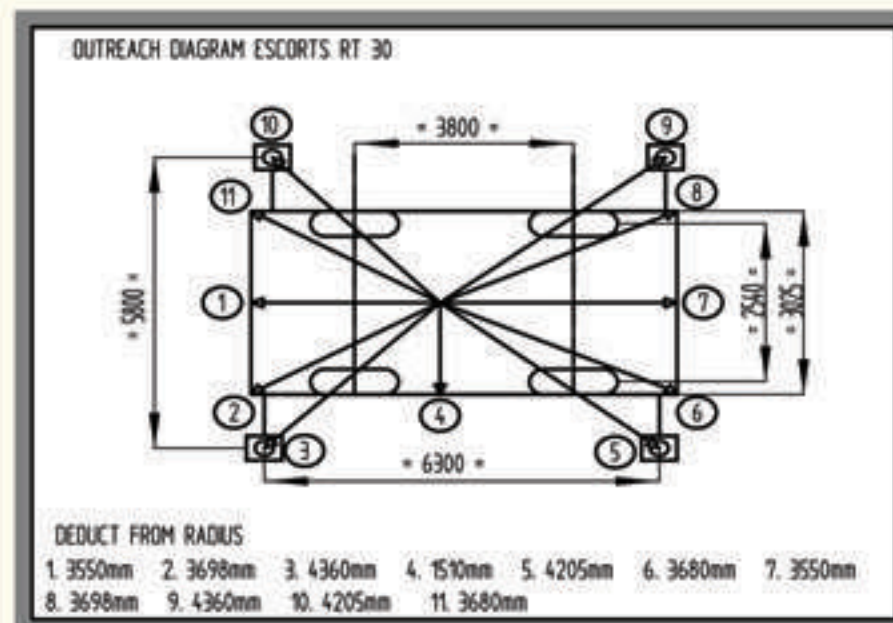
## Weight reductions for Load Handling Devices

8.5 M Boom Lattice	
• Stowed (KG)	450
• Erected (KG)	1800



A = 4 WHEEL TURNING RADIUS IN METERS

B = 2 WHEEL TURNING RADIUS (FRONT AXLE) IN METERS



ESCORTS  
CONSTRUCTION EQUIPMENT

Plot No. 219, Sector-58, Ballabhgarh-121 004, Haryana (India)

Tel.: +91 129 2306569/575/314, Fax: +91 129 2306572 | Email: ece.marketing@escorts.co.in | www.escortsece.com

TOLL FREE No.: 1800 180 4488 (Timings 9.30am to 5.00pm, Monday to Friday)

All dimension are in mm and are variable within  $\pm 5\%$

Maximum Capacity  
32 MT at 3M Radius on outriggers 360° Slew

Maximum Capacity  
20.9 MT at 3M Radius on Tyres Over front

3 Part 25 M Boom

4x4 Wheel Drive with 4-Wheel Steer



Accessories as shown in the picture may not be the part of standard fitment and are subject to change without prior notice.



# Technical Data

## Super Structure Frame

- Super Structure: All welded rigid construction.
- Counter Weight: Removable & bolted to superstructure.

## Boom

- 3 part telescopic boom fully powered synchronized rectangular boom.
- Overall length: Retracted - 10m; Extended- 25m.

## Boom Lifting

- Double acting single cylinder with lowering brake valve.
- Angle of elevation -1 deg. to +83 deg.

## Hoisting

- Hydraulic winch with axial piston motor, grooved drum & planetary reduction gear box with spring loaded cable roller for better rope spooling.

## Slewing

- 360 degree rotation controlled by hydraulic motor.
- Freewheeling safety device for automatic alignment of boom over the load.

## Hook Block

- 32 MT swivel type hook block with 4 sheaves reeved for 8 part line with safety latch.
- Wire rope diameter of 15 /16 mm.

## Operator Cabin

- Fully enclosed cabin of steel construction, sliding door & emergency exit door with large-sized safety glass windows, adjustable driver seat.

## Crane Controls

- Auto reversal mechanism to ensure correct steering wheel control irrespective of the position of the superstructure in relation to the chassis.
- All controls for crane travelling and crane functions are with in easy reach, Armrest mounted joystick and automotive type steering wheel.
- Operator cabin is equipped with wiper, horn, cabin fan & cab light, crane leveling gauge, free slew pedal, brake pedal, throttle pedal, dynamic brake pedal for slew, electric switch for outrigger operation, transmission gear selector, mechanical slew lock lever, air/hydraulic/pilot pressure gauge, rear steer centering indicator, hydraulic filter clogging indicator, low hydraulic oil level warning, axle lockout switch, SLI with audio-visual indicators etc.

## Safety Devices

- Safety devices such as relief valves, balance valves & brake valves fitted in hydraulic system to prevent the accidents.
- Limit switch on boom head for over hoisting snatch block and on winch for over lowering with hydraulic cut off & warning.

## Load Limiting Device

- Indicates boom elevation, boom length, actual load, rated load, load radius, number of falls & boom height.
- In overload condition there is audio visual warning & all such hydraulic operation that tend to increase load moment (unsafe operations) are automatically cut-off while operation like derricking in & hoisting down still being possible.

## Chassis

- Torsion & bending resistant with rigid steel structure box type frame made with high strength alloy steel.

## Outriggers

- Four nos. out and down type, hydraulically operated with fail-safe dual lock valves.

## Engine

- Suitable water cooled, turbo-charged diesel engine of adequate HP.
- Fuel tank - 270 Liters.

## Transmission

- Power shift with build in torque converter with adequate speeds controlled from cab.

## Brakes

- Service: Foot operated, hydraulically applied pneumatically assisted split circuit disc brake on all wheels.
- Parking: Hand operated lever / switch, spring applied hydraulically released front axle mounted disc brake.

## Steering

- Fully hydraulic & independent power steering operated from cab.
- Four steering modes: 2-wheel (Front), 2-wheel (Rear), 4 wheel coordinated & crab.

## Axle

- Front Axle: Drive & steer with differential & planetary reduction hubs, rigid frame mounted.
- Rear Axle : Drive & steer with differential & planetary reduction hubs, centrally pivoted, lateral oscillating with hydraulic locking device.

## Drive

- 4 x 4 for off-road movement & all wheel drive.
- 4 x 2 for road travel, front axle drive.

## Tyres

- Tyres: 18 x 25 32 PR, 4 nos. Earthmover type.

## Electricals

- 2 x 12 volts system
- 2 main head lamps, 2 brake and flashing trafficator lamps at rear, 2 flashing trafficator lamps at front, 1 work lamp.

## Gradeability

- 50% (Unladen)

## Hydraulic Pumps

- One single pump & one double pump mounted on transmission PTO.

## Hydraulic System

- Multi section 3 position proportional & flow sharing directional control valve operated by joystick for slew, telescoping, hoisting and derricking with independent or simultaneous crane operations & progressive speed control.
- Safety valves in all hydraulic cylinders for protection against pipe and hose ruptures.
- Oil cooler for cooling of hydraulic and transmission oil.

## Optional Extra

- Lattice boom extension 8.5 m
- Emergency wind off system
- Fire detection and suppression system
- Cold starting kit
- 6 tonne hook block
- Telematics system
- Spare wheel & tyre
- Air conditioner
- High tension warning device
- Towing hook
- Fog light

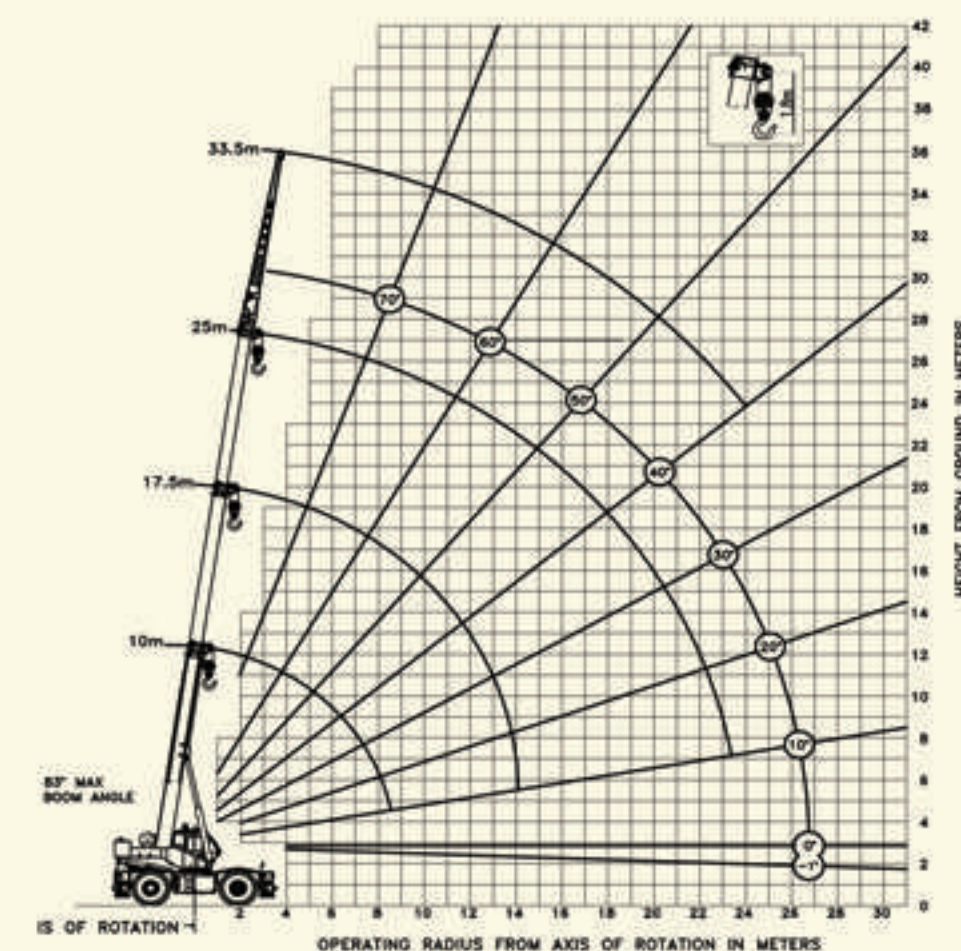
To meet manufacturing conditions and developments in design, the illustrations and information in this publication are subject to modification without notice.

# Load Chart

Working Radius (m)	10.00	13.75	17.50	21.25	25.00	Boom Extension (8.50) 33.50
3.0	32.00	—	—	—	—	—
3.5	26.70	—	—	—	—	—
4.0	23.30	18.20	—	—	—	—
4.5	20.60	18.20	—	—	—	—
5.0	18.45	18.20	14.00	—	—	—
6.0	15.15	15.05	14.00	10.20	—	—
7.0	12.75	12.60	12.40	10.20	8.10	—
8.0	10.95	10.80	10.70	9.80	8.10	4.50
9.0	—	9.35	9.20	8.85	8.00	4.30
10.0	—	7.90	7.80	7.90	7.15	4.09
11.0	—	7.00	6.80	6.85	6.60	3.90
12.0	—	6.20	6.10	6.25	6.00	3.69
13.0	—	—	5.45	5.60	5.55	3.52
14.0	—	—	4.90	5.05	5.15	3.34
15.0	—	—	4.45	4.55	4.65	3.22
16.0	—	—	3.95	4.15	4.20	3.08
17.0	—	—	—	3.80	3.85	2.95
18.0	—	—	—	3.50	3.55	2.83
19.0	—	—	—	3.20	3.30	2.73
20.0	—	—	—	2.90	3.00	2.61
21.0	—	—	—	—	2.75	2.53
22.0	—	—	—	—	2.55	2.44
23.0	—	—	—	—	2.35	2.37
24.0	—	—	—	—	—	2.28
25.0	—	—	—	—	—	2.20
26.0	—	—	—	—	—	2.07
27.0	—	—	—	—	—	1.91
28.0	—	—	—	—	—	1.77
29.0	—	—	—	—	—	1.64
30.0	—	—	—	—	—	1.48
31.0	—	—	—	—	—	1.38

Working Radius(m)	10.00	13.75	17.50	21.25
3.0	14.85	—	—	—
3.5	13.00	—	—	—
4.0	11.55	11.44	—	—
4.5	10.30	10.20	—	—
5.0	9.30	9.25	9.15	—
6.0	7.30	7.20	7.10	7.30
7.0	5.70	5.60	5.50	5.70
8.0	4.60	4.40	4.30	4.65
9.0	—	3.65	3.60	3.80
10.0	—	3.00	2.95	3.15
11.0	—	2.50	2.40	2.60
12.0	—	2.10	2.00	2.20
13.0	—	—	1.70	1.85
14.0	—	—	1.35	1.55
15.0	—	—	1.15	1.35
16.0	—	—	0.95	1.15
17.0	—	—	—	0.90
18.0	—	—	—	0.75
19.0	—	—	—	0.60
20.0	—	—	—	0.50

Working Radius (m)	10.00	13.75	17.50	21.25	25.00
3.0	20.90	—	—	—	—
3.5	18.80	—	—	—	—
4.0	17.05	17.00	—	—	—
4.5	15.55	15.50	—	—	—
5.0	14.35	14.25	14.15	—	—
6.0	12.30	12.25	12.15	12.10	—
7.0	9.85	9.75	9.65	9.95	10.10
8.0	7.90	7.80	7.70	8.05	8.10
9.0	—	6.45	6.35	6.60	6.75
10.0	—	5.40	5.30	5.60	5.70
11.0	—	4.60	4.55	4.75	4.95
12.0	—	3.90	3.85	4.10	4.25
13.0	—	—	3.30	3.55	3.65
14.0	—	—	2.85	3.10	3.25
15.0	—	—	2.50	2.70	2.85
16.0	—	—	2.20	2.40	2.55
17.0	—	—	—	2.10	2.30
18.0	—	—	—	1.85	2.00
19.0	—	—	—	1.65	1.75
20.0	—	—	—	1.45	1.60
21.0	—	—	—	—	1.45
22.0	—	—	—	—	1.30
23.0	—	—	—	—	1.15



Lifting capacities for supported operation only on firm level ground weight of 32T hook block = 350 kgs.  
Lifting capacity = Actual load + hook block + chain/slugs.  
These lifting capacities should not exceed 85% of tipping load.  
Crane complies with Indian standard IS-4573 1982  
For 10 m boom length ratings, tele cylinders must be fully retracted & against stops