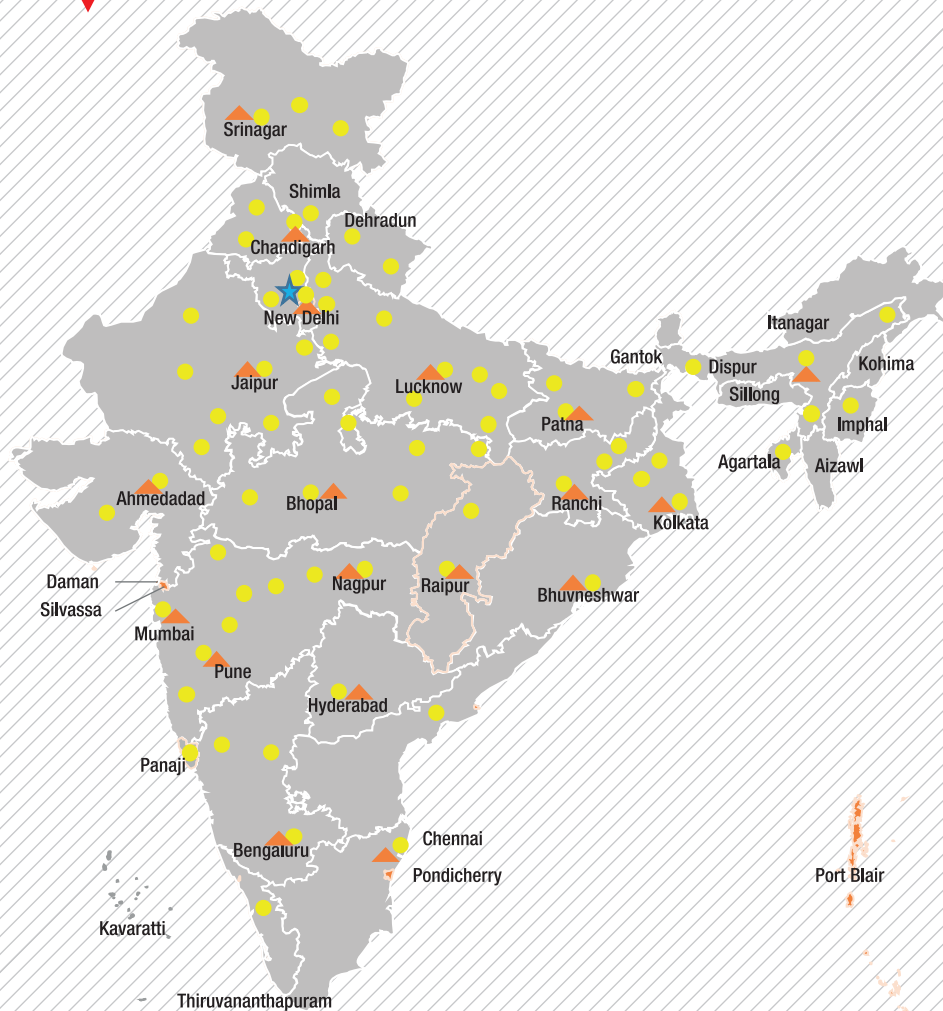


HYDRA 12^{EX} 2P

OUR REACH



★ Head Office | ▲ 17 Business Center | ● 73 Dealers | 825+ Customer Touch points (CTP)



Toll Free No.:
1800-180-4488
(Timings: 9.30 am - 6.00 pm, Monday to Friday)

e-mail: eklg.ece.marketing@escortskubota.com

Escorts Kubota Limited (Construction Equipment)
Plot No. 219, Sector-58, Ballabhgarh- 121 004, Faridabad, Haryana (INDIA)
Tel.: 0129-2306574/2306598/2306571
Fax: 0129-2306572 Website: www.escortsgroup.com



GET IT ON
Google Play
Download Customer App
for more details

Authorised Dealer

MKT/24.7/Hydra 12EX2P

(Accessories as shown in the picture may not be the part of standard fitment and are subject to change without prior notice.)

HYDRA 12^{EX} 2P



Capacity
12 t



Boom Height
27 Feet



Service Interval (Engine)
500 h



Straight Axle
Heavy Duty



Structure
Robust

SPECIFICATIONS

**RATED CAPACITY**

12 tonne	1.5 m radius
3 tonne	6 m radius

**ENGINE**

Make & Model	Escorts AE 4.312C-3A four cylinder, water cooled diesel engine developing 49.5 HP @ 2200 RPM or equivalent
--------------	--

*500 h service interval available in escorts engine.

**TRANSMISSION**

Drive	2 Wheel drive
Type	Heavy duty transmission developed especially for crane application. Constant mesh gearbox coupled with robust straight drive axle. Eight forward and two reverse speeds with high/low selector lever
Creep Speed	1.9 km/h. ideal for crane operation
Max. Speed	29 km/h. (unladen)
Clutch	Heavy duty clutch, wire woven, asbestos free

**STEERING**

Type	Articulated power steering, hydraulically controlled through 2 double acting jacks
Articulation	Up to 50°
Turning Radius	Minimum 6.25 m

**HOIST MECHANISM**

Hoist	Four fall, Hydraulic winch (Winch capacity 10t) Rope dia 13 mm
-------	--

**BRAKES**

Front Wheel	Pneumatic assisted hydraulic brakes
Rear Wheel	Internal expanding type Disc brake operated by slave cylinder
Parking	Hand control valve operated, Air assisted Hydraulic parking brakes at all wheels (Standard models) Hand control valve operated, Air assisted Parking brakes at Front wheels (with Air brake models)

**HYDRAULIC SYSTEM**

Pump	Pin Vane type hydraulic pump
Control Valve	4 spool control valve with built in pressure relief valve and precision control
Hydraulic Filter	Suction line has a 100 mesh in line strainer while return line has 25 microns full flow filter

**ELECTRICAL SYSTEM**

Type	12 V Single battery, Negative earth
------	-------------------------------------

**CAPACITIES**

Fuel Tank	45 l
Hydraulic Tank	65 l

**TRACK**

Front	1 880 mm (center of twin wheels)
Rear	1 680 mm (center of wheels)

**OVERALL DIMENSIONS**

Length	9 880 mm
Width	2 500 mm
Height	2 900 mm

**OPERATING WEIGHT (KG)**

8 850 kg

**BOOM**

Telescoping	Heavy duty, 2 parts box type hydraulically operated
Derricking	Through double acting jacks

**TYRES**

Front	10.00 X 20 - 16 PR (4 number)
Rear	13.00 X 24 - 12 PR (2 number)

**SAFETY SYSTEM**

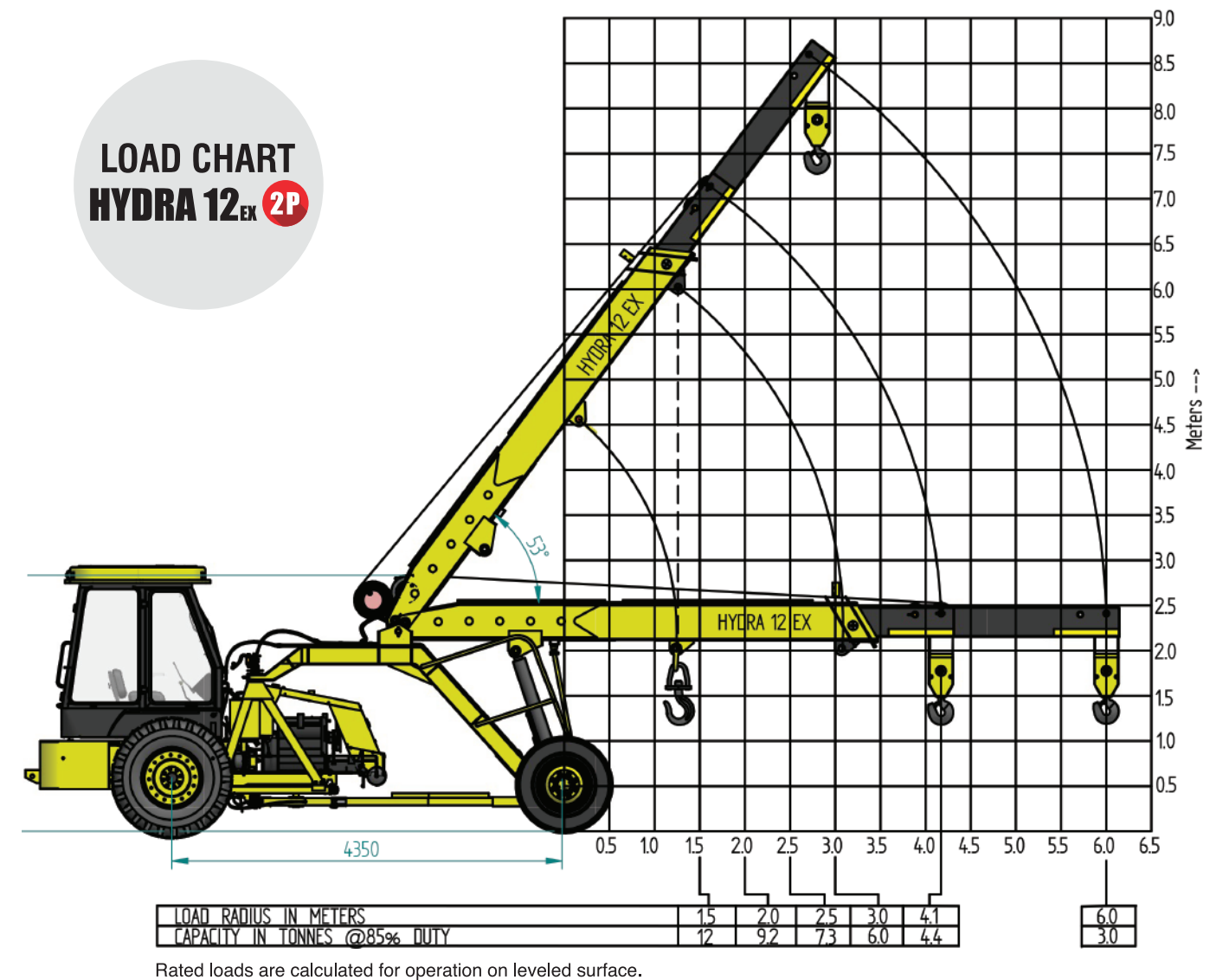
- Overload audio warning system
- Safety brakes on hoist
- Cylinder guard for protection
- Overhoist audio warning system
- Hose protection failure device
- System Low air pressure warning buzzer

**STANDARD ACCESSORIES**

- All Weather Cabin
- Front Bumper
- Reflectors
- Lift Cylinder Guard
- Rear View Mirror
- Turn & Reverse Lamp

**OPTIONAL ACCESSORIES**

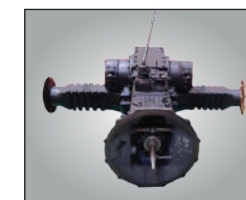
- Fly Jib
- Tool Box
- Fire Extinguisher
- Spark Arrestor
- Safe Load Indicator (SLI)
- 14 x 24 Heavy Duty Tyres
- Over Hoist & Hydraulic Cutoff Kit

HYDRA 12^{EX} 2PLOAD CHART
HYDRA 12^{EX} 2P

FEATURES

**RELIABILITY**

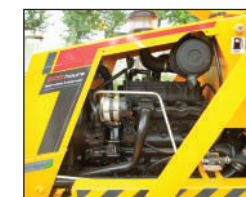
Rugged structures for heavy duty application.

**TRANSMISSION**

Heavy duty straight axle with constant mesh transmission.

**BOOM**

12 Ton Capacity hook with Slotted Boom

**ENGINE**

Escorts engine BS-III (CEV compliant) high on power/torque & low on fuel consumption & maintenance.

HYDRA 12_{EX} ●

Kubota
Escorts Kubota Limited

