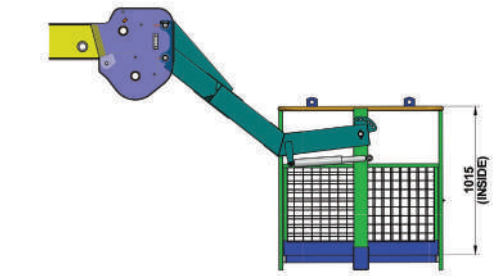
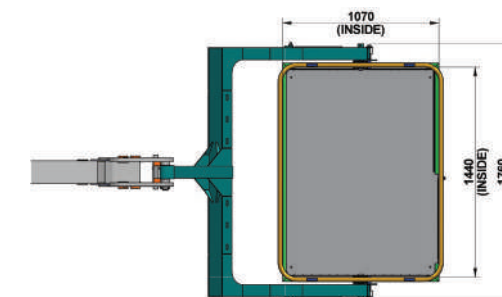
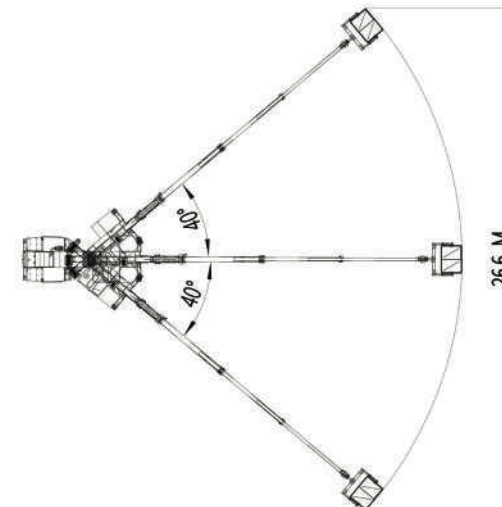
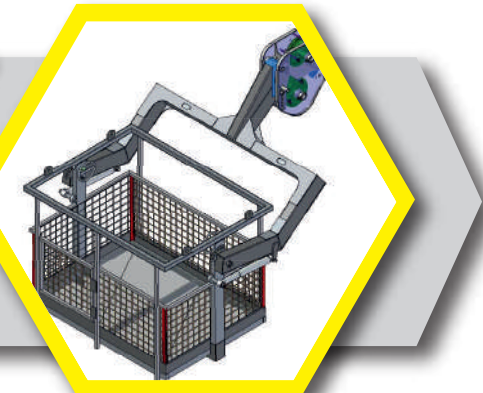


ACCESSORIES

MAN CARRYING BASKET

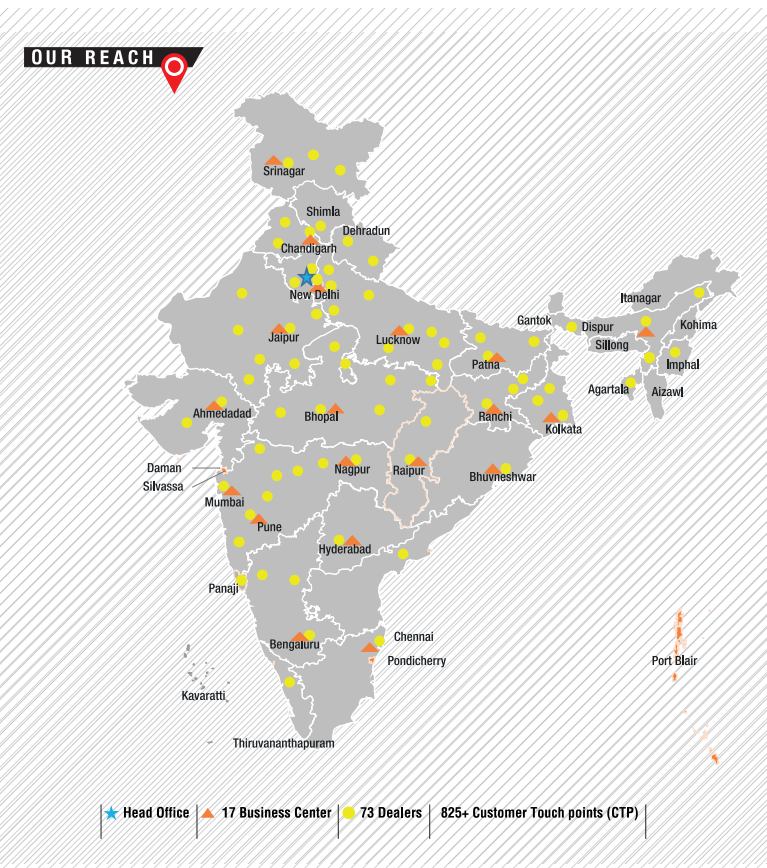
ATTACHMENT SPECIFICATION		
ATTACHMENT WEIGHT	KG	240
MAX. CAPACITY	KG	235
NO. OF PERSONS	N°	2
PLATFORM LENGTH	mm	1440
PLATFORM WIDTH	mm	1070

Intended use
The machine has been designed to lift people and handle small tool, max load 235 kg or 2 persons



ATTACHMENT DIMENSIONS

F17



Toll Free No.: 1800-180-4488
(Timings: 9.30 am - 6.00 pm, Monday to Friday)

e-mail: ekl_g.ece.marketing@escortskubota.com

Escorts Kubota Limited (Construction Equipment)
Plot No. 219, Sector- 58, Ballabhgarh- 121 004, Faridabad, Haryana (INDIA)
Tel.: 0129-2306574/2306598/2306571
Fax: 0129-2306572 Website: www.escortsgroup.com

• The information contained in this leaflet is intended to be of a general nature only. • We reserve the right to change specifications without notice. • All Dimensions and weights are variable within +1-5%.

Kubota
Escorts Kubota Limited

ADDRESS:

North Zone
ESCORTS KUBOTA LTD. - CONSTRUCTION EQUIPMENT
4th Floor 409, Jasola Vihar,
Elegance Tower, Near Apollo Metro Station,
New Delhi – 110019

East Zone
ESCORTS KUBOTA LTD. - CONSTRUCTION EQUIPMENT
Eco Centre, Ambuja Neotia,
609, 6th Floor, EM Block,
Salt Lake Sector-V, Kolkata – 700091

West Zone
ESCORTS KUBOTA LTD. - CONSTRUCTION EQUIPMENT UNIT 1,
3rd Floor, A-Wing, Times Square,
Andheri - Kurla Road, Opp. Mittal Industrial Estate,
Andheri (East), Mumbai – 400059

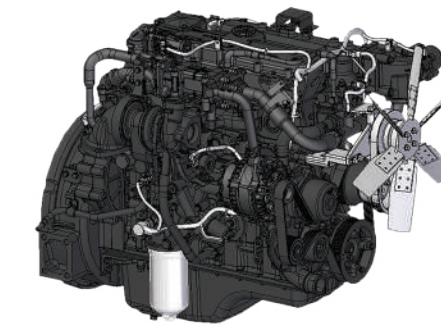
South Zone
ESCORTS KUBOTA LTD. - CONSTRUCTION EQUIPMENT
Subham Square, 1st Floor, S.No.41/9, 1st Main Road,
Karambakkam, Porur, Chennai – 600116.



GET IT ON
Google Play
Download Customer App
for more details

Authorised Dealer

MKT23.1/F 17



NOW WITH

VECV-494 BS-IV series engine

COMFORTABLE	LOW PEDAL FORCE
ECONOMICAL	XTRA FUEL SAVING
DURABLE	XTRA CLUTCH LIFE
POWERFUL	47% HIGH BACKUP TORQUE
ADVANCE	500 HRS SERVICE INTERVAL



Capacity
17 t



Boom Height
(with fly jib)
21 m



Snatch Block
Heavy Duty
(6 falls)



Creep Speed
1.3 km/h



Structure
Heavy Duty



Speed
49 km/h



Kubota
Escorts Kubota Limited

SPECIFICATIONS

RATED CAPACITY
17 tonne 1.5 m radius
1 tonne 15.80 m radius
Max Hook Height 18.2 m
SWL based on 85% stability and strength (IS 4573)

VEHICLE PERFORMANCE
Speed Max 49 km/h
Creep Speed 1.3 km/h
Gradeability 40% unladen

DRIVE
4 Wheel Drive

ENGINE (BS IV)
Volvo - Eicher make CEV BS IV Diesel Engine, Model E494TCI - High Pressure Common Rail System (HPCR) Technology, Turbo Charged Water Cooled, ECU Control Engine Management System, Developing 74 Kw/101HP @ 2200 RPM or Equivalent Engine.

TRANSMISSION & CLUTCH
Engine is coupled with Synchromesh Transmission Gear Box and Auxiliary Gear Box with high/low & 2WD/4WD mode selector
Clutch Single, dry type friction clutch plate (self adjusting)
Clutch Actuation Pneumatic assisted Hydraulic clutch.
Speeds 10 Forward & 2 Reverse with AGB

BRAKES
Service Fully air operated 'S' cam dual circuit brakes on front & rear axles
Parking Air operated, spring actuated, fail safe brakes

AXLES
Front Rigidly mounted
Rear Mounted with two semi-elliptical springs

TYRES
8 number - 11 x 20 - 16 PR

HYDRAULIC SYSTEM
Main pump of 46 cc/rev
Control Valve - 6 spool double acting with a built in relief & auxiliary valves

HOIST
Hydraulically operated with 6 falls, built in safety brakes

STEERING
Full power orbitrol with twin hydraulic double acting 40° articulation on either side

ELECTRICAL SYSTEM
24 V Negative Earth, 75 AH x 2 Battery

BOOM
4 parts Slotted Boom with 3 parts hydraulically powered & fully synchronized, 4th part power extended and manually pinned for safety.
Luffing Range -10° to + 65°

DIMENSIONS
Wheel Base 3 950 mm
Overall Length 10 075 mm
Overall Width 2 450 mm
Overall Height 3 215 mm
Front Wheel Track 1 825 mm
Rear Wheel Track 1 825 mm

OPERATING WEIGHT
Front Axle 6 760 kg
Rear Axle 10 150 kg
Total 16 910 kg

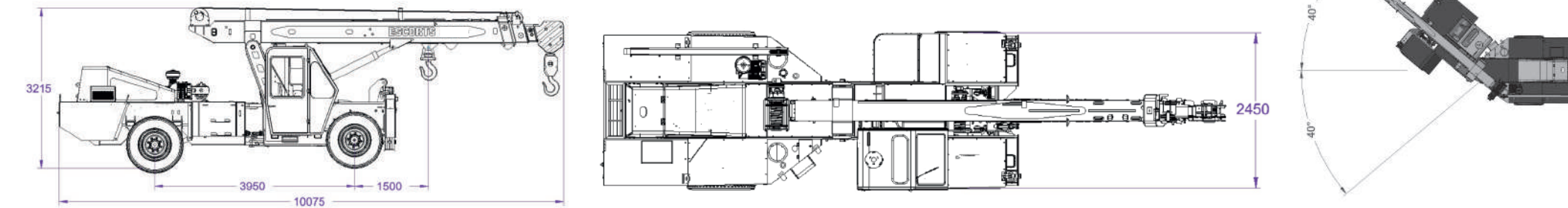
TURNING RADIUS
7.2 m

STRUCTURE AND STABILITY
Robust high strength light weight chassis
Lower CG position & better stability

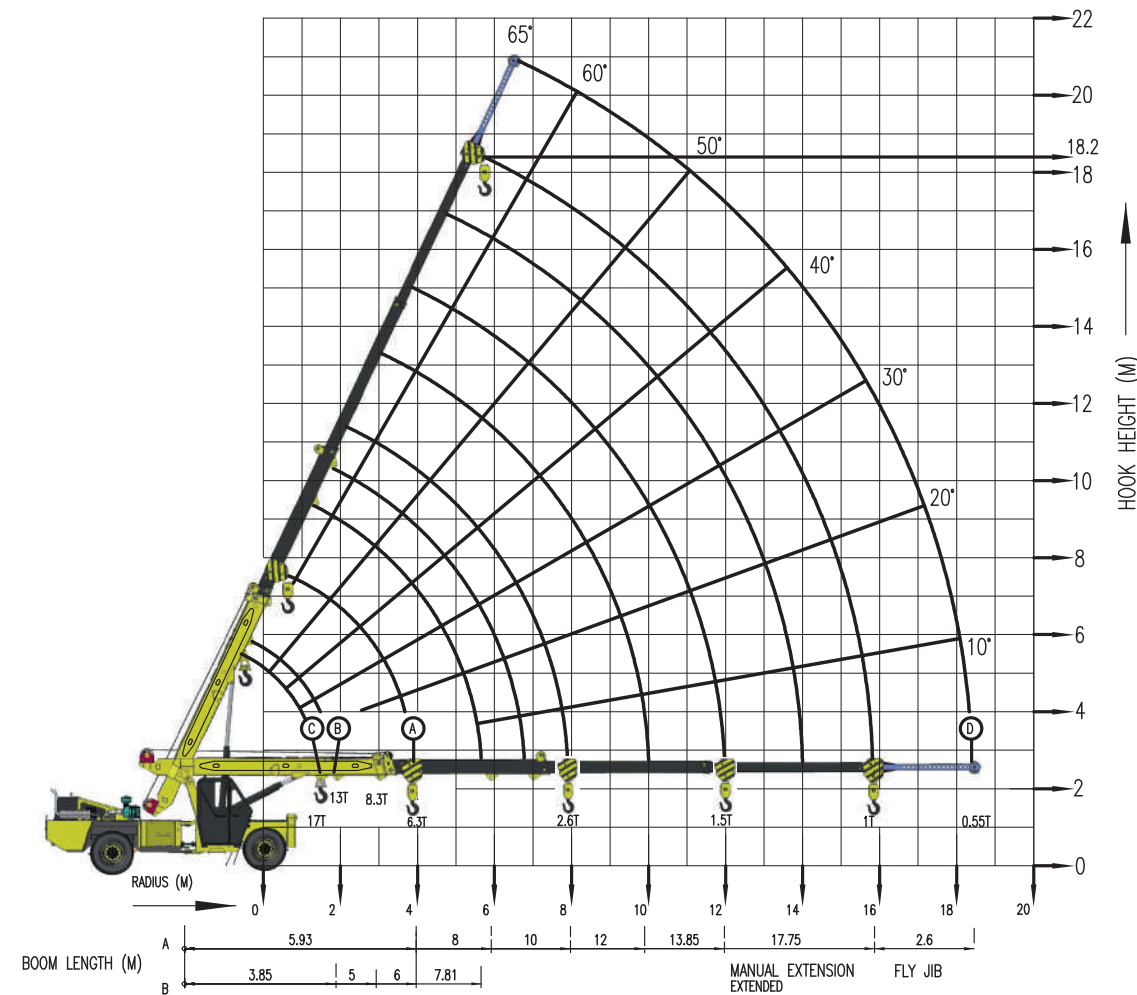
STANDARD ACCESSORIES
Fly jib Tyre Guard, Battery cut off Switch
Outriggers Rear View Camera (Display)

OPTIONAL ACCESSORIES
Drag Winch SLI with Hydraulic Cutoff
Rhino Hook Helper Seat with Platform
Fire Extinguisher Man Carrying Basket
Equipment Monitoring System (EMS)

F17: DIMENSIONS (Ref.) & AREA OF OPERATION



LOAD CHART
F 17



Radius (M)	A						B				C	
	BOOM LENGTH IN METERS - MANUAL EXTENSION RETRACTED						BOOM pivot to inner lug 1st jib extn, manual extn. retracted				17T LUG	
	5.93	8	10	11	13.85	17.75	3.85	5	6	7.81	BOOM FULLY RETRACTED	
2	8250	8250	8250				13200	12100	12100	11600	RADIUS (M)	S.W.L (kg)
3	8250	8250	7590	5720							1.5	17000
4	6325	6270	5577	4950	4365				5280	5225		
5		4850	5200	4400	3800	1850						
6		3950	3850	3800	3400	1700						
7			3150	3150	3000	1600						
8			2650	2725	2640	1540						
9				2340	2280	1450						
10					1950	1375						
11					1705	1290						
12					1485	1245						
13						1220						
16						990						
18												

C	
17T LUG	
BOOM FULLY RETRACTED	
RADIUS (M)	S.W.L (kg)
1.5	17000

D	
FLY JIB (BOOM EXTENDED)	
	820
	820
	770
	770
	660
	710
	660
	550

- RADIUS IS THE HORIZONTAL DISTANCE MEASURED FROM THE CENTRE OF FRONT WHEEL TO THE LOAD POINT
- S.W.L. ARE BASED ON 85% STABILITY & STRENGTH
- S.W.L. ARE BASED ON FIRM LEVEL GROUND WITH TYRES 11X20X16 PLY INFLATED TO 115 PSI, WEIGHT OF HOOKS BLOCKS, SLINGS & CHAIN ETC. INCLUDED.
- LIFT & CARRY - THE S.W.L. SHALL BE CARRIED WITH THE MINIMUM BOOM LENGTH & AS CLOSE TO THE GROUND AS POSSIBLE AT SPEED NOT IN EXCESS OF 2 KMPH.
- BOOM HEAD MOUNTED RHINO HOOK CAPACITY-6000 KG

Rated load are calculated for operation on leveled surface.

F17

FEATURES

HYDRAULIC CLUTCH
Low effort hydro pneumatic clutch to reduce operator fatigue.

ECU EMS SYSTEM
ECU EMS – Electronic Control Unit for Engine Management System for Engine diagnosis and troubleshoot.

HPCR SYSTEM
HPCR – High Pressure Common Rail System - HPCR provide cleaner exhaust, deliver more horsepower and fuel efficiency per displacement.

ELECTRONIC ACCELERATOR PEDAL
Accelerator Pedal - Low effort electronic accelerator pedal reduce operator fatigue.

IGNITION ON/ OFF
Ignition key to switch off engine, no more use of stop cable to engine put off.

ROCKER SWITCHES
Rocker Switch with more reliable and better aesthetic appearance, low operator fatigue.

CLUSTER
Single Digital Cluster with all gauges, fault code detection for engine system, date and time display feature, less number of wiring harness.

SWITCH OFF ENGINE

*Photo may be change w.r.t actual in equipment

F17



F17

