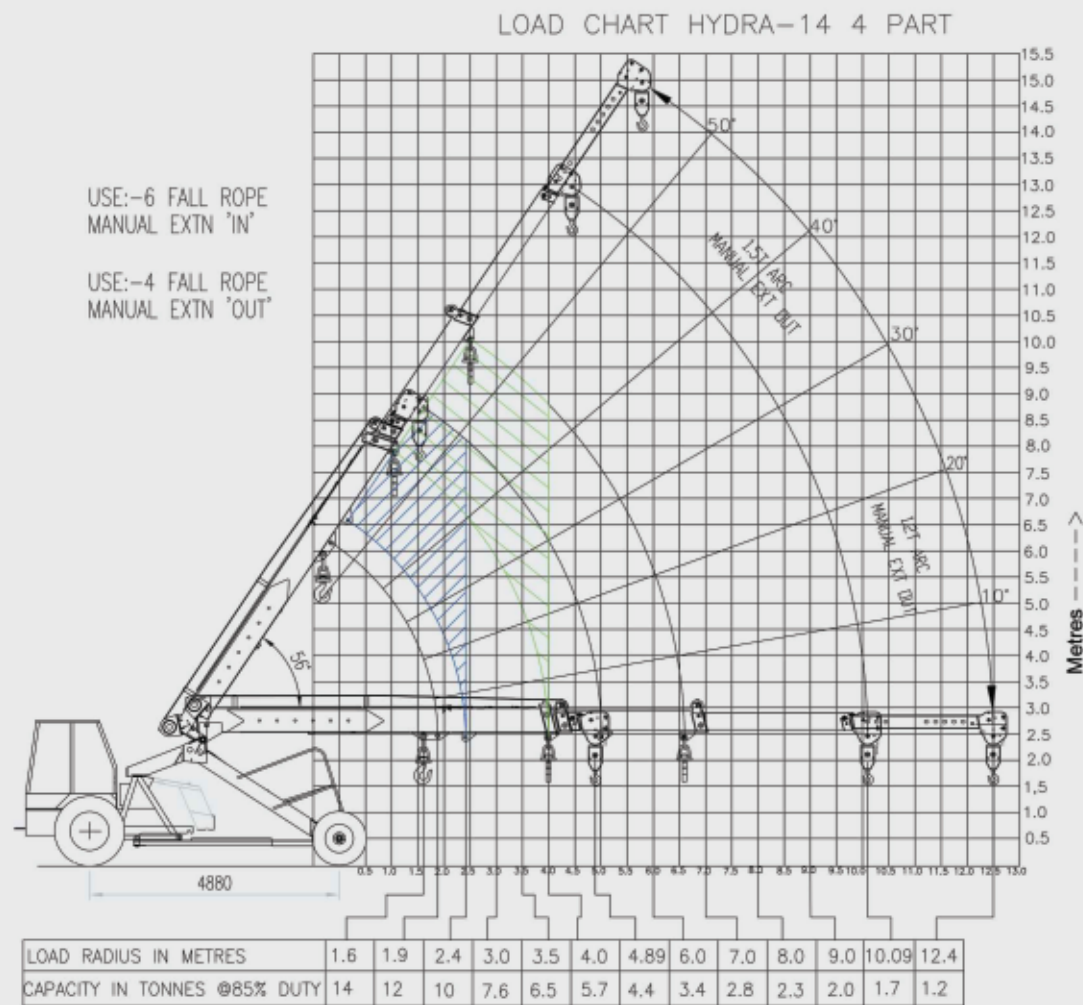


# Load Chart- 14

## (4 Part Slotted Boom)



Rated loads are calculated for operation on levelled surface



**ESCORTS**  
CONSTRUCTION EQUIPMENT

Plot No.- 219, Sector-58, Ballabhgarh-121 004, Distt.- Faridabad, Haryana (INDIA)  
Tel.- 0129-2306574 / 2306598 / 2306571 Fax- 0129- 2306572 Toll Free No.- 1800- 180- 4488 (Timings: 9.30 am - 6.00 pm, Monday to Friday)  
Email- ece.marketing@escorts.co.in Website- www.escortsgroup.com

Accessories as shown in the picture may not be the part of standard fitment and are subject to change without prior notice.

# HYDRA 14



**ESCORTS**  
CONSTRUCTION EQUIPMENT



**14T 4 Part**

**Slotted Boom**

**Rope Compensation**

**Higher Winch Capacity**

**PROVEN BEST-IN-CLASS STABLE**

The information contained in this leaflet is intended to be of general nature only. We reserve the right to change specifications without notice. All dimensions and weight are variable within ± 5%.

# HYDRA 14

## Specifications



<b>RATED CAPACITY</b>	14T @ 1.6m radius 1.2T @ 12.4m radius
<b>ENGINE</b>	<b>Make &amp; Model</b> Escorts AE 4.312C-3A Four Cylinder, Water Cooled Diesel Engine, developing 49.5 HP @2200 RPM or equivalent
<b>TRANSMISSION</b>	<b>Drive</b> 2 Wheel Drive
	<b>Type</b> Heavy duty transmission developed especially for crane application. Constant Mesh gearbox coupled with straight drive axle. Eight forward and Two reverse speeds with High / Low selector lever.
	<b>Creep Speed</b> 1.9 km/hr, ideal for crane operation
	<b>Max. Speed</b> 29 km/hr (unladen)
<b>STEERING</b>	<b>Clutch</b> Single plate, heavy duty type
	<b>Type</b> Articulated power steering, hydraulically controlled through 2 double acting jacks.
	<b>Articulation</b> Up to 56 degree
<b>BRAKES</b>	<b>Turning Radius</b> 6.5m
	<b>Front Wheel</b> Pneumatic assisted hydraulic brakes.
	<b>Rear Wheel</b> Disc brakes actuated through a slave cylinder.
<b>TYRES</b>	<b>Parking</b> Hand operated mechanically actuated at rear wheels.
	<b>Front</b> 11.00x20-16PR (4 Nos.), inflation pressure 110-115 PSI
<b>TRACK</b>	<b>Rear</b> 13.00x24-12PR (2 Nos.), inflation pressure 35 PSI Water Ballasted
	<b>Front</b> 1930 mm
<b>BOOM</b>	<b>Rear</b> 1680 mm
	<b>Telescoping</b> 4 part, 3part hydraulically powered & fully synchronized, 4th part power extended & manually pinned.
<b>OPTIONAL ACCESSORIES</b>	<b>Type</b> Slotted boom with rope compensation.
	<b>Derricking</b> Through double acting Jacks.

<b>HOIST MECHANISM</b>	<b>Hoist</b> Hydraulic Winch. Six falls (winch capacity 12T) Rope dia 13 mm
	<b>Pump</b> Vane type Hydraulic Pump
<b>HYDRAULIC SYSTEM</b>	<b>Control Valve</b> 4 spool control valve with built inpressure relief valve and precision control.
	<b>Hydraulic Filter</b> Suction line has a 100 mesh inline strainer while return line has 25 microns full flow filter.
	<b>Type</b> 12V Single Battery, Negative earth
<b>ELECTRICAL SYSTEM</b>	<b>Fuel Tank</b> 45 Ltrs.
	<b>Hydraulic Tank</b> 65 Ltrs.
<b>CAPACITIES</b>	<b>Gross Vehicle Weight</b> 11100 Kg
	<b>Length</b> 11700 mm
<b>OPERATING WEIGHT (KG)</b>	<b>Width</b> 2550 mm
	<b>Height</b> 3250 mm
<b>OVERALL DIMENSIONS</b>	<b>Rope compensation for auto leveling</b>
	<b>Overload audio warning system</b>
	<b>Hose protection failure device</b>
	<b>Safety Brakes on Hoist</b>
<b>SAFETY SYSTEM</b>	<b>Cylinder guard for protection</b>
	<b>All weather cabin</b>
	<b>Front bumper</b>
<b>STANDARD ACCESSORIES</b>	<b>Reflectors</b>
	<b>Lift cylinder guard</b>
	<b>Rear view mirror</b>
	<b>Turn &amp; reverse lamp</b>
<b>OPTIONAL ACCESSORIES</b>	<b>Fly Jib</b>
	<b>Fire Extinguisher</b>
	<b>Spark Arrestor</b>
	<b>Air Condition Cabin</b>
	<b>Steering Wheel</b>
	<b>Safe Load Indicator</b>
<b>OPTIONAL ACCESSORIES</b>	<b>Over Hoist &amp; Overload Cutoff</b>
	<b>Heavy Duty Tyres on Rear Wheels</b>



### Engine

Escorts engine BS-III (CEV compliant) – high on power/ torque & low on fuel consumption & maintenance.



### Transmission

Constant Mesh Transmission coupled with direct axle with 8F & 2R with better gear life and speed options. Can achieve top speed of 29 kmph and a creep speed of 1.9 kmph at rated rpm.



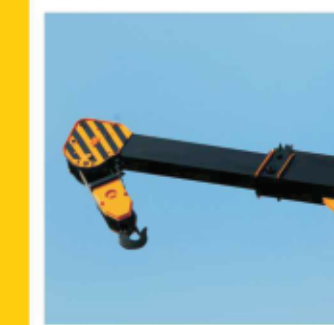
### Cabin

Ergonomically designed spacious Cabin with modern dashboard for utmost operator comfort and operation.



### Rear Brakes

Disc Brakes in the rear for effective braking



### Slotted Boom & Rope

Compensation for precision handling & auto levelling of loads.



### Hydraulic Winch of 12T

Capacity with 6 fall snatch block for precision handling & low maintenance.



### Vertical Height

Attained 15m with 3 part hydraulic +1 part power assist boom.