



The information contained in this leaflet is intended to be of general nature only. We reserve the right to change specifications without notice. All dimensions and weight are variable within ± 5%.



Escorts Construction Equipment: Plot No.- 219, Sector-58, Ballabhgarh-121 004, Distt.- Faridabad, Haryana (INDIA)
 Tel.- +91-129-2306574/ 2306598/ 2306571 Fax- +91-129-2306572
 Toll Free No.- 1800- 180- 4488 (Timings: 9.30 am - 6.00 pm, Monday to Friday)
 E-mail- ece.marketing@escorts.co.in Website- www.escortsgroup.com

Accessories as shown in the picture may not be the part of standard fitment and are subject to change without prior notice.

Hub/Dec 2018



ESCORTS F-15

Hydraulic Mobile Pick-n-Carry Crane



- Travel Long Distance on own Power
- Boom Height with Flyjib: 21m
- Heavy Duty Hoist Winch
- Front Mounted Cabin with Steering Wheel
- Slotted Boom with Self Compensating Snatch Block
- New Technology Control Valve for Precision Handling
- 4 Wheel/ 2 Wheel Drive Selector
- Dragging Winch with Outriggers (Optional)
- Safe Load Indicator with Hydraulic Cutoff (Optional)

SPECIFICATIONS F-15

Rated Capacity

14 Tonne at	1.50 m radius
900 Kg at	15.80 m radius
Max Hook Height	17.60 m

Vehicle Performance

Speed	Max 40 kmph
Gradeability	40% unladen

Drive

4 wheel drive

Engine

Diesel engine of VOLVO Eicher make, Model E483 TCIC, Turbo charged water cooled, developing 101 HP @2400 rpm or equivalent engine

Transmission

Syncromesh gearbox with auxiliary gearbox
Speeds-10 forward and 2 reverse

Clutch

Single, dry type friction clutch plate

Brakes

Service: Fully air operated 'S' cam dual circuit brakes on front & rear axles
Parking: Air operated, spring actuated fail, safe brakes

Axles

Front- Rigidly mounted
Rear- Mounted with two semi-elliptical springs

Tyres

8 nos. - 11 x 20 - 16PR

Hydraulic System

Main pump of 46 cc/rev
Control Valve-3 spool double acting with a built in relief & auxiliary valves

Electrical System

24 V, DC

Steering

Full power orbitrol with twin hydraulic double acting rams 40° articulation on either side

Boom

4 part boom, 3 part hydraulically powered & fully synchronized
4th part power extended and manually pinned for safety

Hoist

Hydraulically operated with 4 falls
Built in safety brakes

Wheel Base

3.95 m

Dimensions

Overall Length	9725 mm
Overall Width	2450 mm
Overall Height	3215 mm

Wheel Track

Front	1825 mm
Rear	1825 mm

Operating Weight

Front Axle	6315 kg
Rear Axle	9000 kg
Total	15315 kg

Turning Radius

7.2 m

Standard Accessories

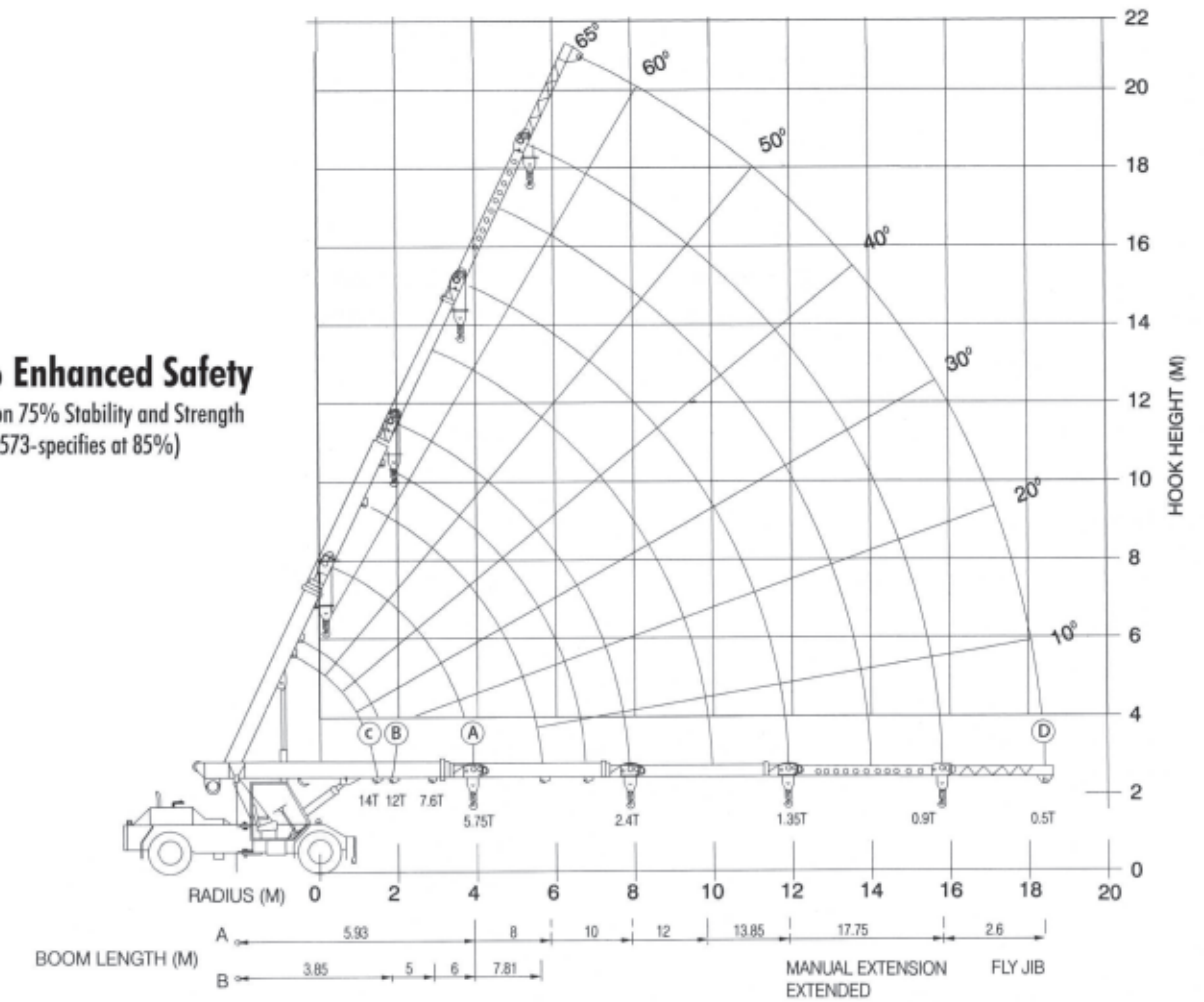
All weather cabin with unrestricted visibility

Optional Accessories

- 2.6 m Fly Jib
- Spare Wheel
- Air Conditioned Cabin
- Safe Load Indicator with Hydraulic Cutoff
- RHINO Hook
- Man Carrying Basket (275 kg)
- Additional Cabin
- 4 x 2 Wheel Drive
- Outriggers
- Dragging Winch

13.33% Enhanced Safety

SWL Based on 75% Stability and Strength
(IS 4573-specifies at 85%)



RADIUS (M)	(A)					
	BOOM LENGTH IN METRES- MANUAL EXTENSION RETRACTED					MANUAL EXTENSION EXTENDED
	5.93	8	10	12	13.85	
2	7500	7500	7500			
3	7500	7500	6900	5200		
4	5750	5700	5070	4500	3970	
5		4400	4760	4000	3460	1680
6		3600	3525	3475	3100	1575
7			2900	2900	2750	1475
8			2400	2478	2400	1400
9				2130	2080	1300
10					1775	1250
11					1550	1180
12					1350	1135
13						1110
16						900
18						

(B)			
PIVOT TO INNER LUG 1ST JIB EXTN. MANUAL EXTN. RETRACTED			
3.85	5	6	7.81
12000	11000	11000	10550
	7000	7000	6700
		4800	4750
			3570

(C)	
14T LUG	
BOOM FULLY RETRACTED	
RADIUS (M)	S.W.L. (KG)
1.5	14000

RADIUS (M)	(E)				RADIUS (M)	FLY JIB (BOOM FULLY EXTENDED)
	BOOM PIVOT TO OUTER LUG 1ST JIB EXTN. MANUAL EXTN. RETRACTED					
	4.97	6.5	7.5	8.93	6.4	750
2	11000	10500	10000	7500	8.0	750
3	7600	7400	7300	6000	10.9	700
4		5000	4900	4800	13.5	650
5			3800	3700	15.6	600
6				3000	17.1	550
7				2300	18.0	500
					18.4	500

- Radius is the horizontal distance measured from the center of front wheel to the load point.
- S.W.L. are based on firm level ground with tyres 11 x 20 - 16 ply rating to 115 PSI. Weight of hooks, blocks, slings & chain etc. included.
- Lift & Carry - the S.W.L. shall be carried with the minimum boom length & as close to the ground as possible at speed not in excess of 2 kmph.
- Boom head mounted RHINO hook capacity - 6000 kg.