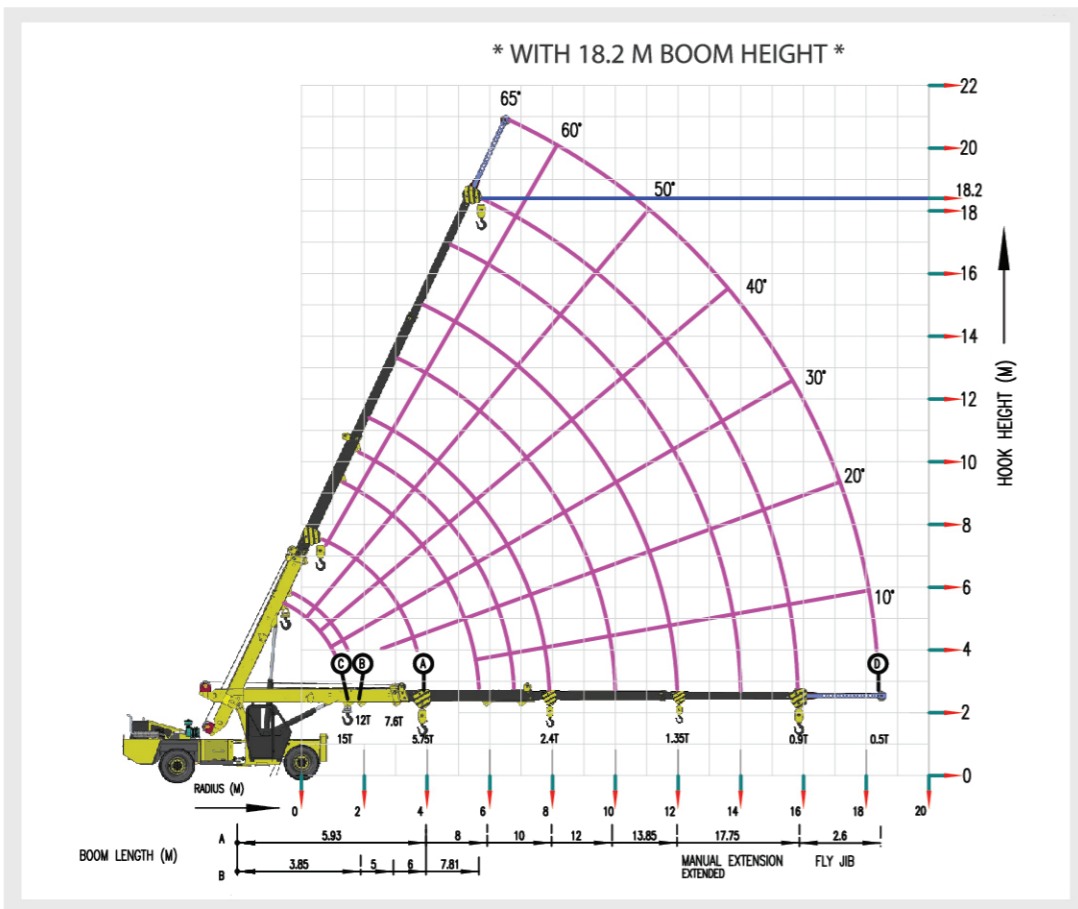


TRX-15 Load Chart

RADIUS (M)	A						B				C	
	BOOM LENGTH IN METRES - MANUAL EXTENSION RETRACTED						BOOM PIVOT TO INNER LUG 1ST JIB EXTN. MANUAL EXTN. RETRACTED				15 LUG	
	5.93	8	10	12	13.85	17.75	3.85	5	6	7.81	BOOM FULLY RETRACTED	
2	7500	7500	7500				12000	11000	11000	10550	RADIUS (M) S.W.L (KG)	
3	7500	7500	6900	5200			7000	7000	6700	1.5 15000		
4	5750	5700	5070	4500	3970			4800	4750			
5		4400	4760	4000	3460	1680						
6		3600	3525	3475	3100	1575						
7			2900	2900	2750	1475						
8			2400	2478	2400	1400						
9				2130	2080	1320						
10					1775	1250						
11					1550	1180						
12					1350	1135						
13						1100						
16						900						
18												

* RADIUS IS THE HORIZONTAL DISTANCE MEASURED FROM THE CENTRE OF FRONT WHEEL TO THE LOAD POINT
 * S.W.L. ARE BASED ON 85% STABILITY & STRENGTH
 * S.W.L. ARE BASED ON FIRM LEVEL GROUND WITH TYRES 11X20-16 PLY INFLATED TO 115 PSI, WEIGHT OF HOOKS, BLOCKS, SLINGS & CHAIN ETC. INCLUDED.
 * LIFT & CARRY - THE S.W.L. SHALL BE CARRIED WITH THE MINIMUM BOOM LENGTH & AS CLOSE TO THE GROUND AS POSSIBLE AT SPEEDS NOT IN EXCESS OF 2 KMPH.
 * BOOM HEAD MOUNTED RHINO HOOK CAPACITY-6000 KG



Rated loads are calculated for operation on levelled surface

The information contained in this leaflet is intended to be of general nature only. We reserve the right to change specifications without notice. All dimensions and weight are variable within +/- 5%.

TRX-15



- Hydraulic clutch
- Electronic speedometer
- Best in class creep speed- 1.3 KMPH
- High tensile steel boom
- Low CG position and better stability

LIFT
LOAD
ACTION



Escorts Construction Equipment: Plot No.- 219, Sector-58, Ballabhgarh-121 004, Distt.- Faridabad, Haryana (INDIA)
 Tel.- 0129- 2306574/2306598/2306571 Fax- 0129- 2306572
 Toll Free No.- 1800- 180- 4488 (Timings: 9.30 am - 6.00 pm, Monday to Friday)
 E-mail- ece.marketing@escorts.co.in Website- www.escortsgroup.com

Specifications

Rated Capacity

15 Tonne at	1.50 m radius
900 kg at	15.80 m radius
Max Hook Height	17.60 m

Vehicle Performance

Speed	Max 44 KMPH
Gradeability	40% unladen
Creep Speed	1.3 KMPH

Drive

4 Wheel Drive

Engine

Diesel Engine of TATA MOTORS make, Model 497 TC, Turbo charged water cooled, developing 76Ps @ 2200 rpm.

Transmission

Synchromesh Transmission Gearbox of TATA MOTORS make with Auxiliary Gearbox: Speeds-10 forward and 2 reverse

Clutch

Single, dry type friction clutch plate

Brakes

Service: Fully air operated 'S' cam dual circuit brakes on front & rear axles

Parking: Air operated, spring actuated fail, safe brakes on rear axle

Axles

Front- Rigidly Mounted

Rear- Mounted with two semi-elliptical springs

Make- TATA

Tyres

Total 8 nos. - 11 x 20 - 16PR

Hydraulic System

Main pump of 46 cc/rev

Control Valve-6 spool double acting with a built in relief & auxiliary valve

Electrical System

12 V, DC, Negative Earth

120 AH Battery for Longer Life

Steering

Full power orbitrol with twin hydraulic double acting rams 40° articulation on either side

Boom

4 part boom, 3 part hydraulically powered & fully synchronized

4th part power extended and manually pinned for safety

Luff Angle: -10° to +65°

Hoist

Hydraulically Operated Winch with Max Line Speed 50m/min

Built in safety brakes

Wheel Base

3.95 m

Dimensions

Overall Length	10075 mm
Overall Width	2450 mm
Overall Height	3215 mm

Wheel Track

Front	1810 mm
Rear	1810 mm

Operating Weight

	2WD	4WD
Front Axle	6675 kg	6980 kg
Rear Axle	9260 kg	9730 kg
Total	15935 kg	16710 kg

Turning Radius

7.2 m

Standard Accessories

All weather cabin with unrestricted visibility

Optional Accessories

- 2.6 m Fly Jib
- Spare Wheel
- Air-conditioned Cabin
- Safe Load Indicator with Hydraulic Cutoff
- RHINO Hook
- Beacon Light
- Rear View Camera
- Fire Extinguisher
- Man Carrying Basket (275 kg)
- 4x2 Wheel Drive
- Outriggers
- Helper Seat with Platform
- Tyre Guard
- Equipment Monitoring System (Telematics)

- 15 T capacity crane with 21m vertical height with flying jib
- Travel long distance on own power
- Front mounted cabin with steering wheel
- Slotted boom

- Chassis type design, optimized geometry for enhanced stability and control
- Best-in-class creep speed
- Ergonomically designed cabin with easy access to levers

Features



Rear LCD

SLI Monitoring System

Actual Cabin



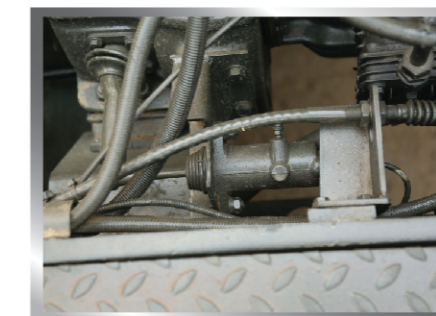
Heavy Duty Winch



Tyre Guard



Electronic Speedometer



Hydraulic Clutch



Rear view camera & integrated protected tail lights