



ESCORTS

HYDRA 12 HD

HEAVY DUTY

HEAVY DUTY STRUCTURE

STRAIGHT AXLE-DISC BRAKES

BIGGER ENGINE WITH HIGHER TORQUE



HYDRA 12 HD

SPECIFICATIONS

RATED CAPACITY

- 12T @1.9m radius
- 2.5T @8.4m radius

ENGINE

- Escorts AE4.312-3A Four Cylinder, water cooled Diesel Engine, developing 49.5 HP @ 2200 RPM or equivalent

TRANSMISSION

- **Drive-** 2 Wheel Drive
- **Type-** Heavy duty transmission developed specially for crane application. Constant Mesh gearbox coupled with straight drive axle. 08 forward and 02 reverse speeds with High/ Low selector lever
- **Max. Speed-** 29 km/hr (unladen)
- **Creep Speed-** 1.9 km/hr - ideally suited for crane operations (with load)
- **Clutch-** Single plate, heavy duty type

STEERING

- **Type-** Articulated power steering, hydraulically controlled through two doubling acting jacks
- **Articulation-** up to 55°
- **Turning radius-** 6.5 m

HOIST MECHANISM

- **Hoist-** Hydraulic Winch. Four falls. Rope dia 13 mm

BRAKES

- **Front Wheel-** Pneumatic assisted hydraulic brakes.
- **Rear Wheel-** Disc brakes actuated through a slave cylinder.
- **Parking-** Hand operated mechanically actuated at rear wheels.

HYDRAULIC SYSTEM

- **Pump-** Vane type Hydraulic Pump
- **Control Valve-** 4 spool control valve with built in pressure relief valve and precision control.
- **Hydraulic Filter-** Suction line has a 100 mesh inline strainer while return line has 25 microns full flow filter.

ELECTRICAL SYSTEM

- **Type-** 12V Single Battery, Negative earth

CAPACITIES

- **Fuel Tank:** 45 litre
- **Hydraulic Tank:** 65 litre

OVERALL DIMENSIONS

- **Length-** 10600 mm
- **Width-** 2500 mm
- **Height-** 3100 mm

OPERATION WEIGHT

- 10600 kg

BOOM

- **Telescoping-** Heavy duty, 3 part box type hydraulically operated
- **Derricking-** Through double acting Jacks

TYRES

- **Front-** 11.00x20-16PR (4 Nos.), inflation pressure 110-115 PSI
- **Rear-** 13.00x24-12PR (2 Nos.), inflation pressure 35 PSI (Water Ballasted)

TRACK

- **Front-** 1930 mm
- **Rear-** 1680 mm

SAFETY DEVICES

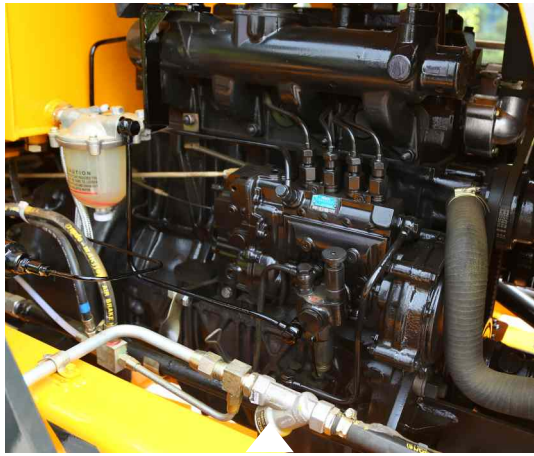
- New Overload audio warning system
- Safety brake on hoist
- Cylinder guard for protection
- Counter balance protection valve in the lift line against hose burst
- Visual warning against parking brakes on

UNDER THE STANDARD ACCESSORIES

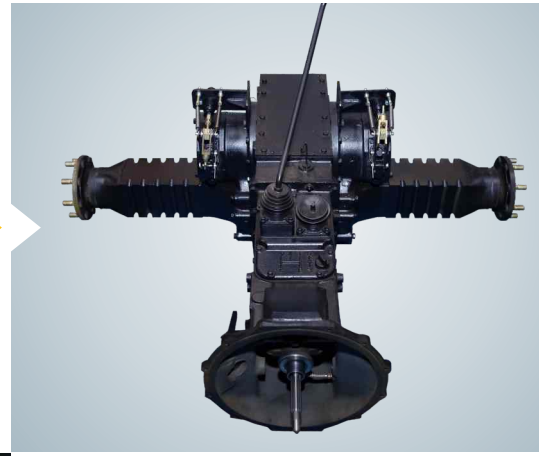
- All weather cabin
- Front Bumper
- Reflectors
- Lift cylinder guard
- Rear view mirror
- Turn & Reverse lamp

OPTIONAL ACCESSORIES

- Fly jib
- Steering Wheel
- Fire extinguisher
- Safe load indicator
- Over Hoist & hydraulic cut off kit
- Spark Arrestor
- Air Brakes on Front Wheels
- Air Conditioned cabin
- 14X24 Heavy Duty Tyres
- Extra hooks



Transmission:
 Constant mesh transmission
 coupled with direct axle
 with 8 F & 2 R speed option.
 Can achieve top speed of 29 KMPH
 and creep speed of 1.9 KMPH



Better Pick Up:
 Bigger engine with
 less fuel consumption
 and higher torque.
 Increased service life



Service Cost Reduced:
 500 hrs. service interval
 1st time in crane



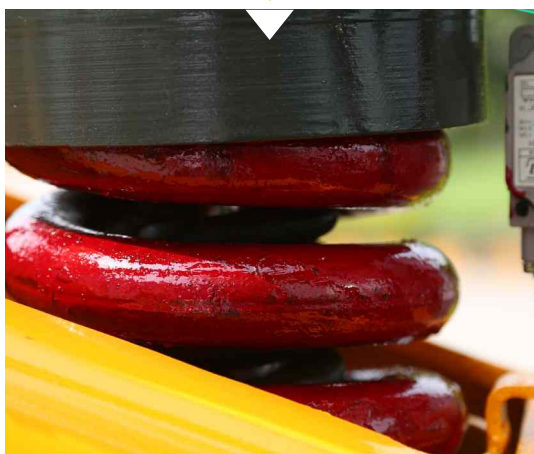
Increased Stability:
 At fully articulated
 condition
 Wider lift cylinders
 span (400mm)



Better Safety:
 Double Over load
 warning spring
 1st PnC with this feature



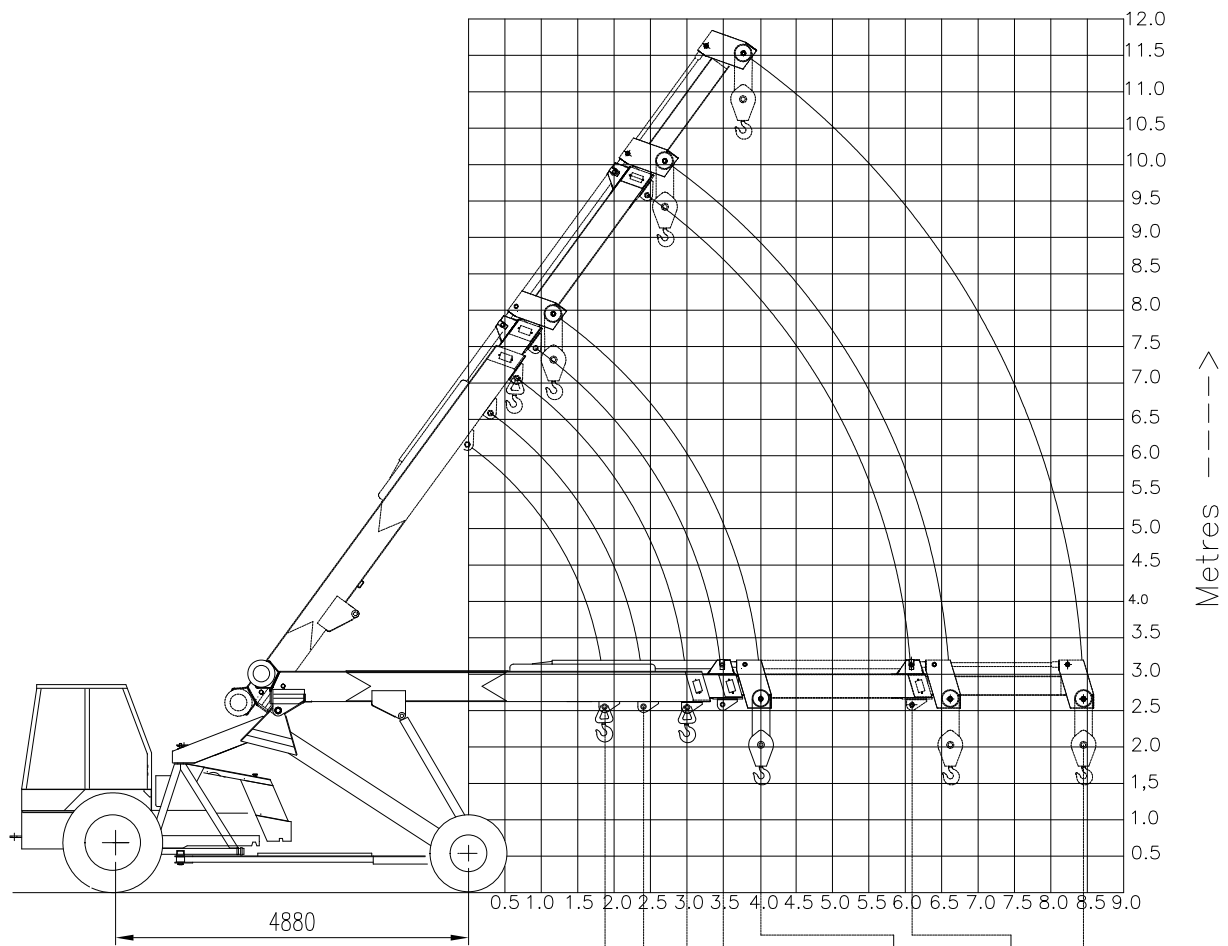
Reliability:
 Rugged structures for
 heavy duty application



New Style:
 New style grill and
 bonnet for aesthetics



LOAD CHART HYDRA 12 HD



LOAD RADIUS IN METRES	1.9	2.4	3.0	3.5	4.0	6.1	8.4
CAPACITY IN TONS AS PER IS 4573	12	10	7.6	6.5	5.7	3.6	2.5



ESCORTS CONSTRUCTION EQUIPMENT

Escorts Construction Equipment
 Plot No. 219, Sector 58, Ballabgarh - 121 004, Haryana, India
 Tel.: +91 129 2306586, 129 2306300
 Email: ece.marketing@escorts.co.in
 www.escortsece.com
Toll Free No.: 1800 180 4488