

## Specification

### Engine

Make & Model Kirlskar model 4R 1040 TC, 4 Cylinder, Water Cooled BS-III (CEV) compliant Diesel Engine developing 76 HP (56KW) @2200 rpm

### Transmission

Type Carraro Synchro - Shuttle Transmission with Torque Converter. Speed-4 forward & 4 reverse, Full Synchronesh in all gears, with electrically operated forward & reverse shuttle, provide on-the-go shifting in all gears

Travel Speed Max speed 38 kmph (unladen)

Creep Speed 1.7 kmph at rated rpm

Clutch Clutchless operation

### Steering

Type Articulated power steering, hydraulically controlled through two double acting jacks

Articulation Upto 56° on either side

Turning radius 6.2 m

### Operational Timings (no load at rated engine RPM)

Steering (lock to lock)	6 - 10 sec	Boom raising	19 - 24 sec
Boom lowering	10 - 15 sec	Telescoping	12 - 15 secs
Extension in	12 - 15 sec	Hoist line speed	50 m/ min.
Extension out	17 - 20 sec		

### Brakes

Front Wheel Pneumatically assisted hydraulic brake

Rear Wheel Pneumatically assisted hydraulically actuated dual line self adjusting oil immersed, multidisc on rear axle, well protected from dirt, water etc, requiring no maintenance

Parking Hand operated caliper disc brake on rear axle

### Track

Front 1920 mm

Rear 1680 mm

### Tyres

Front 11.00 x 20 - 16PR (Four Nos.)  
Inflation pressure 115 PSI

Rear 14.00 x 25 - 20PR (Two Nos.)  
Inflation pressure 69 PSI

### Boom

Luffing Angle Upto 63°

Telescoping 4 part box type boom, 3 part hydraulically powered & fully synchronised, 4th part power extended & manually pinned

Type Rope compensated & synchronised

Derricking Through double acting jacks

### Hoist Mechanism

Hoist Hydraulic winch (reputed make) of 12 T capacity with six fall snatch block. Rope dia 13 mm

### Hydraulic System

Pump Vane type Hydraulic pump

Control Valve 4 spool control valve with built in pressure relief valve & precision control

Hydraulic Filter Suction line has a 100 mesh inline strainer while return line has 10 microns full flow filter

### Electrical System

Type 12 V Single Battery, Negative earth

### Capacities

Fuel Tank 65 ltr.

Hydraulic Tank 130 ltr.

### Operating Weight (Kg)

Weight 13820 Kg

### Overall Dimensions

Length 10900 mm

Width 2600 mm

Height 3470 mm

### Safety System

Overload audio warning system

Rope compensation for auto levelling

Safety brakes on hoist

Hose protection failure device

Cylinder guard for protection

### Standard Accessories

All Weather Cabin

Lift Cylinder Guard

Front Bumper

Rear View Mirror

Reflectors

Turn & Reverse Lamp

### Optional Accessories

Fly Jib

Fire Extinguisher

Spark Arrestor

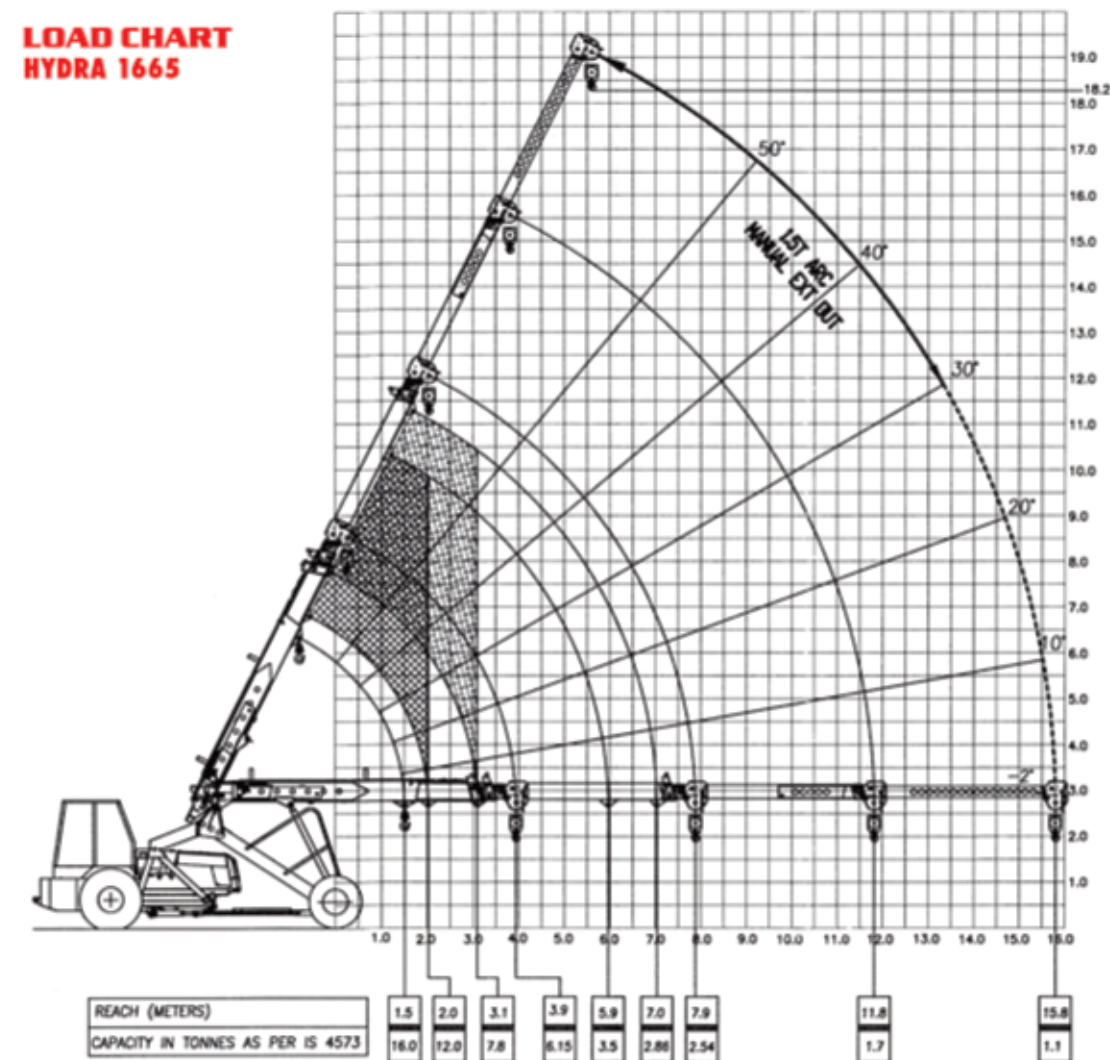
Air Conditioned Cabin

Steering Wheel

Over Hoist & Over Load Cut off

Safe Load Indicator with Hydraulic Cut-off

### LOAD CHART HYDRA 1665



Rated loads are calculated for operation on levelled surface



Toll Free No.- 1800- 180- 4488

(Timings: 9.30 am - 6.00 pm, Monday to Friday)

Escorts Construction Equipment: Plot No.- 219, Sector-58, Ballabhgarh-121 004,  
Distt.- Faridabad, Haryana (INDIA) T.: 0129- 2306574/2306598/2306571 F.: 0129- 2306572  
E.: ece.marketing@escorts.co.in W.: www.escortsgroup.com

Accessories as shown in the picture may not be the part of standard fitment and are subject to change without prior notice.

Hub/Dec 2018

# HYDRA-1665



## A Combination of Capacity, Reach & Stability

16 T Crane with 65 ft. Boom

Carraro Transmission & Rear Axle

Max. Boom Height attained 19 m/ 21 m with Fly Jib

Travel Speed of 38 km/hr

Creep Speed of 1.7 km/hr at rated rpm

Heavy Duty Winch of 12 T Capacity

Slotted Boom with Rope Compensation

Safe Load Indicator (optional)

The information contained in this folder is intended to be of general nature only. We reserve the right to change specifications without notice. All dimensions and weights are variable within +/- 5%.

# Features



**Engine**  
Proven, Powerful & Fuel efficient Kiloskar 4R 1040 TC water cooled diesel engine developing 76 hp @ 2200 rpm



**Vertical Height**  
Vertical reach of 19 m with 4 part boom and 21 m with 4 part boom + fly jib makes it ideal for erection and commissioning job.



**Hydraulic Winch**  
Hydraulic winch of 12 T capacity (reputed make) is high on performance & low on maintenance. Six fall snatch block with per line pull of 2.5 T



**Counter Balance Valve**  
CB valves provided for safety against dropping of loads under hose failures



**Cabin and Dash Board**  
Spacious cabin with ergonomically designed controls for Operator's comfort



**Ground Clearance**  
High Ground clearance makes it ideal for uneven project sites & rough terrain application



**Structure**  
High strength structures for better rigidity, integrity and longer life



**Service and Maintenance**  
Low on Maintenance, Ease of Service, Ground level access & support across the country



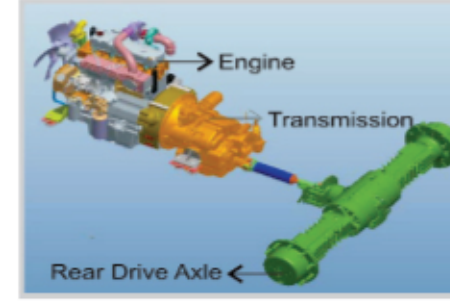
**Slotted Boom and Rope Compensation**  
Slotted Boom & Rope compensation helps in improving the load positioning & auto levelling of loads.



**Safe Load Indicator (optional)**  
SLI is loaded with features like Data logger, calibration without load & fail safe operation making it accurate, reliable & easy to maintain



**Articulation**  
Articulation of 56 degree on either side with a low turning radius of 6.2 m, ideal for compact areas



**Transmission and Axle**  
Carrara Synchro - Shuttle Transmission with Torque Converter coupled with rear drive axle provides superior traction, grade-ability & travel speed. 4 F & 4 R speeds, full synchromesh gears, with electrically operated forward & reverse shuttle provides on-the-go shifting in all gears

**Travel and Creep Speed**  
Combination of top speed of 38 kmph for long distance travel & creep speed as low as 1.7 kmph at rated rpm for movement under load makes it ideal for plant hirer

