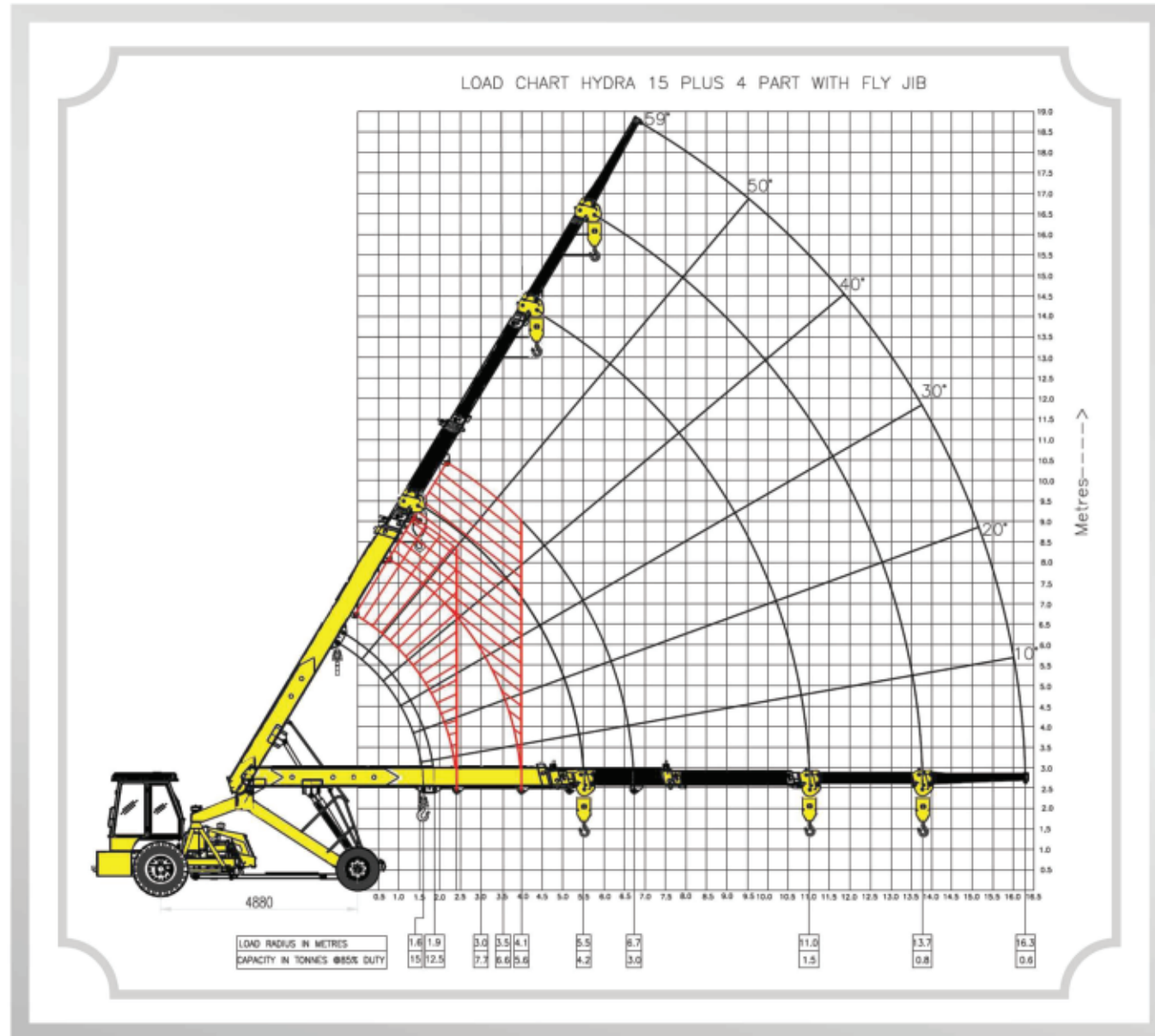


HYDRA 15 PLUS

Load Chart



Rated loads are calculated for operation on levelled surface

The information contained in this leaflet is intended to be of general nature only. We reserve the right to change specifications without notice. All dimensions and weight are variable within ± 5%.

HYDRA 15 PLUS



15T Capacity
Low operational cost
500 Hrs. Service interval
Heavy duty backend
High pickup

- 15T capacity
- Low operational cost
- 500 hrs. service interval
- Heavy duty backend
- High pickup



ESCORTS
CONSTRUCTION EQUIPMENT

Escorts Construction Equipment: Plot No. 219, Sector- 58, Ballabhgarh- 121 004, Faridabad, Haryana (INDIA)

Tel.: 0129-2306574/2306598/2306571 Fax: 0129-2306572 Toll Free No.: 1800-180-4488

(Timings: 9.30 am - 6.00 pm, Monday to Friday) e-mail: ece.marketing@escorts.co.in

Website: www.escortsgroup.com

Accessories as shown in the picture may not be the part of standard fitment and are subject to change without prior notice.

Hub/Dec 2018

SPECIFICATIONS

RATED CAPACITY	
15 T @ 1.6 m radius 0.8 T @ 13.7 m radius	
ENGINE	
Make & Model Escorts AE 4.312C-3A Four Cylinder, Water Cooled Diesel Engine, developing 49.5 HP @ 2200 RPM or equivalent	
TRANSMISSION	
Drive 2 Wheel Drive	Creep Speed 1.9 km/hr, ideal for crane operation
Type Heavy duty transmission developed especially for crane application. Constant Mesh gearbox coupled with straight drive axle. Eight forward and Two reverse speeds with High/Low selector lever.	Max. Speed 29 km/hr (unladen)
Clutch Single plate, heavy duty type	
STEERING	
Type Articulated power steering, hydraulically controlled through 2 double acting jacks	Articulation Upto 56°
Turning Radius 6.5 m	
BRAKES	
Front Wheel Pneumatic assisted hydraulic brakes	Parking Hand operated mechanically actuated at rear wheels
Rear Wheel Disc brakes actuated through a slave cylinder	
TYRES	
Front 11.00 x 20-16PR (4 Nos.), inflation pressure 110-115 PSI	Rear 13.00 x 24-12PR (2 Nos.), inflation pressure 35 PSI Water Ballasted
TRACK	
Front 1930 mm	Rear 1680 mm
HOIST MECHANISM	
Hoist Hydraulic Winch. Six falls (winch)	capacity 12T) Rope dia 13 mm
ELECTRICAL SYSTEM	
Type 12V Single Battery, Negative earth	

CAPACITIES	
Fuel Tank 45 Ltrs.	Hydraulic Tank 65 Ltrs.
HYDRAULIC SYSTEM	
Pump Vane type Hydraulic Pump	Hydraulic Filter Suction line has a 100 mesh inline strainer while return line has 25 microns full flow filter
Control Valve 4 spool control valve with built in pressure relief valve and precision control	
BOOM	
Telescoping 4 part, 3 part hydraulically powered & fully synchronized, 4th part power extended & manually pinned	Type Slotted boom with rope compensation
Derricking Through double acting Jacks	
OPERATING WEIGHT (KG)	
Gross Vehicle Weight 11760 Kg	
OVERALL DIMENSIONS	
Length 12495 mm	Height 3250 mm
Width 2550 mm	
SAFETY SYSTEM	
<ul style="list-style-type: none"> Rope compensation for auto leveling Overload audio warning system Hose protection failure device 	<ul style="list-style-type: none"> Safety Brakes on Hoist Cylinder guard for protection
STANDARD ACCESSORIES	
<ul style="list-style-type: none"> All weather cabin Lift cylinder guard Turn & reverse lamp 	<ul style="list-style-type: none"> Front bumper Rear view mirror Reflectors
OPTIONAL ACCESSORIES	
<ul style="list-style-type: none"> Fly Jib Air Brakes on Front Wheel Safe Load Indicator Fire Extinguisher Steering Wheel 	<ul style="list-style-type: none"> Spark Arrestor Over Hoist & Overload Cutoff 14 x 24 Heavy Duty Tyres

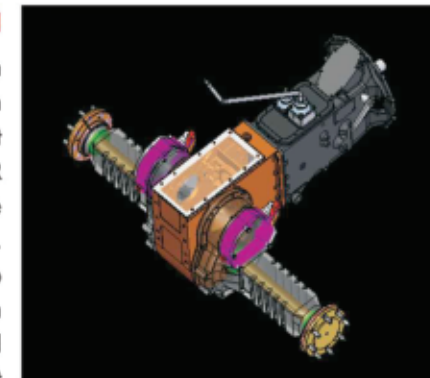
HYDRA 15 PLUS

ENGINE
Escorts engine BS-III (CEV compliant) - high on power/torque & low on fuel consumption & maintenance.



FEATURES

TRANSMISSION
Constant Mesh Transmission coupled with direct axle with 8F & 2R with better gear life and speed options. Can achieve top speed of 29 kmph and a creep speed of 1.9 kmph at rated rpm.



REAR BRAKES
Disc Brakes in the rear for effective braking.



HYDRAULIC WINCH OF 12T
Capacity with 6 fall snatch block for precision handling & low maintenance.



CABIN
Ergonomically designed spacious cabin with modern dashboard for utmost operator comfort and operation.



SLOTTED BOOM & ROPE
Compensation for precision handling & auto leveling of loads.



VERTICAL HEIGHT
Attained 15m with 3 part hydraulic + 1 Part power assist boom. 18.5 meter with Flyjib (optional).

