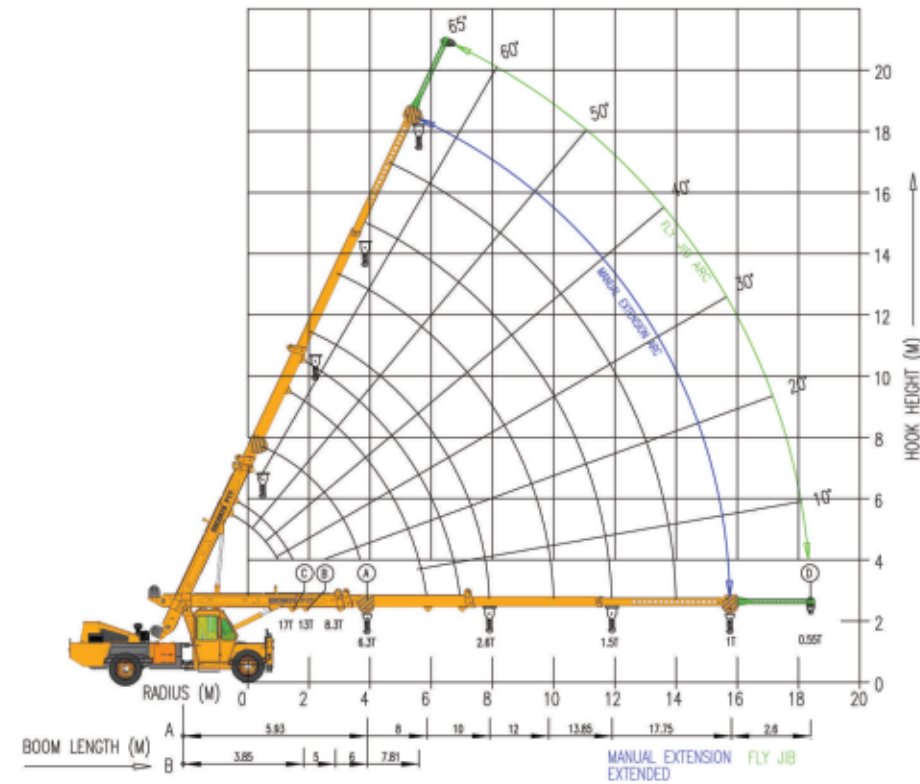


ESCORTS F-17

Load Chart



Rated loads are calculated for operation on levelled surface

RADIUS (M)	A						B				C		D FLY JIB (BOOM FULLY EXTENDED)
	BOOM LENGTH IN METRES - MANUAL EXTENSION RETRACTED					MANUAL EXTENSION EXTENDED	BOOM PIVOT TO INNER LUG 1ST JIB EXTN. MANUAL EXTN. RETRACTED				17T LUG BOOM FULLY RETRACTED		
	5.93	8	10	12	13.85	17.75	3.85	5	6	7.81	RADIUS (M)	S.W.L (KG)	
2	8250	8250	8250				13200	12100	12100	11600	1.5	17000	
3	8250	8250	7590	5720				7700	7700	7370			
4	6325	6270	5577	4950	4365				5280	5225			
5		4850	5200	4400	3800	1850							
6		3950	3850	3800	3400	1700							
7			3150	3150	3000	1600							
8				2650	2725	2640	1540						
9					2340	2280	1450						
10						1950	1375						
11						1705	1290						
12						1485	1245						
13							1220						
16							990						
18													

* RADIUS IS THE HORIZONTAL DISTANCE MEASURED FROM THE CENTRE OF FRONT WHEEL TO THE LOAD POINT
 * S.W.L ARE BASED ON 85% STABILITY & STRENGTH
 * S.W.L ARE BASED ON FIRM LEVEL GROUND WITH TYRES 11 X 20 X 16 PLY INFLATED TO 115 PSI, WEIGHT OF HOOKS, BLOCKS, SLINGS & CHAIN ETC. INCLUDED
 * LIFT & CARRY - THE S.W.L. SHALL BE CARRIED WITH THE MINIMUM BOOM LENGTH & AS CLOSE TO THE GROUND AS POSSIBLE AT SPEEDS NOT IN EXCESS OF 2 KMPH
 * BOOM HEAD MOUNTED RHINO HOOK CAPACITY-6000 Kg



Escorts Construction Equipment: Plot No. 219, Sector- 58, Ballabgarh- 121 004, Haryana (INDIA)
 Tel.: 0129-2306574/2306598/2306571 Fax: 0129-2306572
 Toll Free No.-1800- 180- 4488 (Timings: 9.30 am - 6.00 pm, Monday to Friday)
 E-mail: ece.marketing@escorts.co.in Website: www.escortsgroup.com

Accessories as shown in the picture may not be the part of standard fitment and are subject to change without prior notice.

ESCORTS F-17



New
Lifts loads and profits up there



- Best Creep Speed of 1.2 KMPH
- Best Travelling Speed with 10 F + 2 R Speed Gear Box
- Rugged Structure for Heavy Duty Application



The information contained in this leaflet is intended to be of general nature only. We reserve the right to change specifications without notice. All dimensions and weight are variable within ± 5%.

ESCORTS F-17

Specification

Rated Capacity

17 Tonne @ 1.5 m radius
1 Tonne @ 15.80 m radius
Max Hook Height 17.6 m with 4 part boom

Vehicle Performance

Speed: Max: 45 KMPH, Creep: 1.2 KMPH
Gradeability: 40% unladen

Drive

4 Wheel Drive

Engine

Diesel Engine of VOLVO EICHER make,
Model E483 TCIC, Turbo Charged
water cooled
Developing 101 HP @ 2400 rpm or
Equivalent Engine
Enhanced fuel efficiency by optimized
power to wt ratio

Transmission

Synchromesh Gearbox with Auxillary Gearbox
Speeds- 10 Forward and 2 Reverse

Clutch

Single, Dry type friction clutch plate

Brakes

Service: Fully air operated 'S' cam
dual circuit brakes
on front & rear axles
Parking: Air operated, spring actuated
fail safe brakes

Axles

Front: Front - Rigidly mounted
Rear: Mounted with two semi elliptical springs

Tyres

8 nos.- 11 X 20-16PR

Hydraulic System

Main Pump of 46 cc/rev
Control Valve - 6 spool double acting
with a built in relief &
auxillary valves

Electrical System

24V, DC

Steering

Full power orbitrol with twin hydraulic
double acting rams 40° articulation
on either side

Boom

4 part boom, 3 part hydraulically powered
& fully synchronised
4th part power extended and manually
pinned for safety

Hoist

Hydraulically operated with 6 Falls Heavy Duty
Winch built in safety brakes

Structure and Stability

Robust high strength light wt C-box chassis
Lower CG position & better stability

Wheel Base

3.95 m

Dimensions

Overall length : 10075 mm
Overall width : 2450 mm
Overall height : 3215 mm

Wheel Track

Front : 1825 mm
Rear : 1825 mm

Operational Weight

Front Axle : 6800 Kg
Rear Axle : 10000 Kg
Total : 16800 Kg

Turning Radius

7.3 m

Optional Accessories

2.6 m Fly Jib	Spare Wheel
AC cabin	Outriggers
Rhino Hook	Beacon Light
Fire Extinguisher	Drag Winch
Tyre Guard	SLI with Hydraulic Cut off
Helper Seat with Platform	
Rear View Camera (Display)	
Man Carrying Basket (275 kg)	
Equipment Monitoring System (EMS)	

ESCORTS F-17

Features



Rear LCD



Spacious Cabin



SLI Monitoring System



Control of Lever for Ease of Operations



Speakers



Heavy Duty Winch



Heavy Duty Snatch Block with 6 Falls



Heavy Duty Articulation Joint



Rear View Camera & Integrated Protected Tail Lights



Safe Load Indicator



Tyre Guard

- 17 T capacity crane with 21m vertical height with fly jib
- Travel long distance on own power
- Front mounted cabin with steering wheel
- Chassis type design, optimised geometry for enhanced stability and control

- Slotted Boom
- Best-in-class Creep Speed
- Heavy Duty Winch with 6 fall snatch block with rope compensation for precision positioning
- Ergonomically designed cabin with easy access to levers