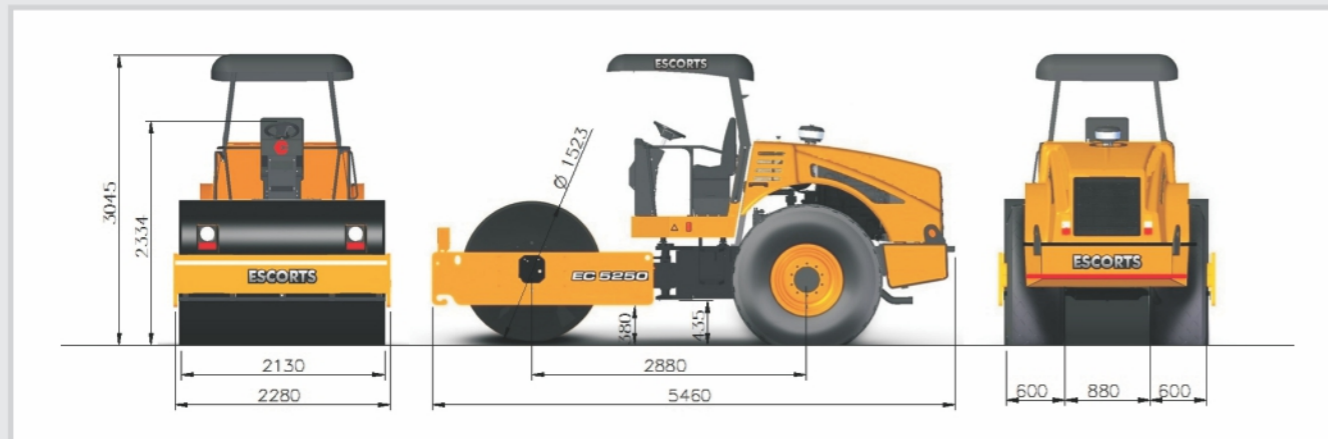




ESCORTS
CONSTRUCTION EQUIPMENT

SOIL VIBRATORY COMPACTOR



STATIC DIMENSIONS

| Dimensions | Unit | STD | DD | PD Shell Kit |
|----------------------|------|------|------|--------------|
| Overall Width | mm | 2275 | 2275 | 2275 |
| Overall Length | mm | 5460 | 5460 | 5460 |
| Overall Height | mm | 3045 | 3045 | 3095 |
| Drum Diameter | mm | 1523 | 1523 | 1739 |
| Drum Width | mm | 2130 | 2130 | 2130 |
| Ground Clearance | mm | 435 | 435 | 485 |
| Wheel Base | mm | 2880 | 2880 | 2880 |
| Drum Shell Thickness | mm | 25 | 25 | 25 |

Rated loads are calculated for operation on leveled surface.



ESCORTS
CONSTRUCTION EQUIPMENT

Plot No.- 219, Sector-58, Ballabhgarh- 121 004
Distt.- Faridabad, Haryana (INDIA)

Tel.- +91-129-2306574 / 2306598 / 2306571 Fax- +91-129-2306572

Toll Free No.- **1800- 180- 4488** (Timings: 9.30 am - 6.00 pm, Monday to Friday)

e-mail- ece.marketing@escorts.co.in Website- www.escortsgroup.com

Accessories as shown in the picture may not be the part of standard fitment and are subject to change without prior notice.

Hub/Mar 2019

The information contained in this leaflet is intended to be of general nature only. We reserve the right to change specifications without notice.



More power
on the **ground**

EC 5250

Compa_octor

• **ROLL 'n ROCK** •

ESCORTS ADVANTAGE

ENGINE

POWERED BY FUEL EFFICIENT AND RELIABLE KOEL WATER COOLED ENGINE



Model
4R1040TA3 BS-III

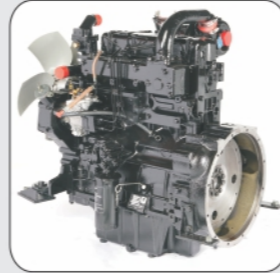
Power
105 hp @ 2200 rpm

Torque
375 Nm @ 1300 rpm

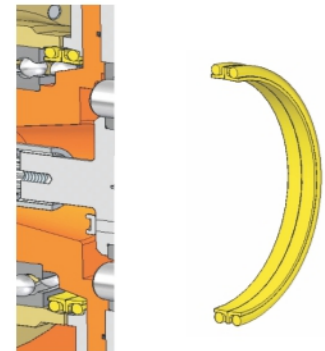
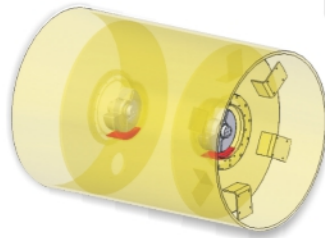
High Idle Speed
2450 +/- 50 rpm

Fuel Injection Pump
Mechanical Rotary Pump

Aspiration
Turbocharged + Intercooled



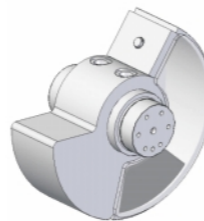
SIMPLE AND RUGGED DRUM ASSEMBLY



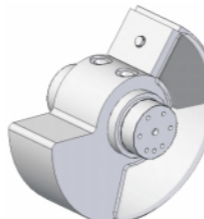
Cartridge type Eccentric weights.
Separate Case housing for oil.
Heavy duty DUCONE metal seal.

ADVANTAGE

Oil quantity just 5 ltr.
Lowest maintenance cost.
Oil immersed Cartridge type.
Eccentric weights & hence silent shifts during starts and stops.



High Amplitude



Low Amplitude

WEATHER PROOF INSTRUMENT CLUSTER & SWITCHES



- IP 67 Rocker switches.
- IP 65 Instrument cluster from front side.
- 12 Volt electrical system with color coded wiring.
- 65 Amp alternator.
- Visual warning for low lube oil pressure & high coolant temp.
- Starting system provides 785 cold cranking amps(CCA).
- Alternator malfunctioning light.

TECHNICAL SPECIFICATIONS

| PARAMETERS | Unit | STD | DD | PD Shell Kit |
|--|-------|--|-------------|--------------|
| WEIGHTS | | | | |
| Max Operating Weight | Kg | 10350 | 10550 | 11950 |
| Operating Weight | Kg | 9350 | 9550 | 10950 |
| Axle Load - Front | Kg | 5050 | 5250 | 6650 |
| Axle Load - Rear | Kg | 4300 | 4300 | 4300 |
| Static Linear Load | Kg/cm | 23.7 | 24.6 | - |
| Centrifugal Force - Low | Kg | 9046 | 9046 | 9046 |
| Centrifugal Force - High | Kg | 21492 | 21492 | 21492 |
| Total Applied Force - Low | Kg | 14096 | 14296 | 15696 |
| Total Applied Force - High | Kg | 26542 | 26742 | 28142 |
| Pad Foot | Nos. | - | - | 120 |
| DRIVE | | | | |
| Hydrostatic Drive, Infinitely Variable | | Real Wheel | All - Wheel | All - Wheel |
| VIBRATION SYSTEM | | | | |
| Frequency | Hz | 30 | 30 | 30 |
| High Amplitude | mm | 1.72 | 1.72 | 1.3 |
| Low Amplitude | mm | 0.8 | 0.8 | 0.5 |
| SPEED | | | | |
| Working Speed | Km/hr | 0-9 | 0-6 | 0-6 |
| Traveling Speed | Km/hr | 0-23 | 0-10 | 0-10 |
| GRADEABILITY | | | | |
| Max Gradeability | % | 40 | 55 | 55 |
| ENGINE | | | | |
| Make | | KOEL | | |
| Model | | 4R1040 TA-3 | | |
| Type | | 4 Cylinder, Water Cooled BS- III | | |
| Combustion System | | Direct Injection | | |
| Aspiration | | Turbocharged + Intercooled | | |
| Rated Power (Gross) | | 105 HP@2200 RPM | | |
| Fuel Injection Pump | | Mechanical Rotary Pump | | |
| STEERING | | | | |
| Steering Angle | Deg | +/- 36 | | |
| Oscillation Angle | Deg | +/- 10 | | |
| Turning Radius- Outer/Inner | mm | 5900/3750 | | |
| BRAKES | | | | |
| Service Brakes | | Hydrostatic | | |
| Parking Brakes, Emergency Brakes | | Spring applied, hydraulically released | | |
| TYRES | | | | |
| 2 nos., All Weather Pattern | | 23.1 / 26-8 PR | | |
| CAPACITY | | | | |
| Fuel Tank | Ltr | 265 | | |
| Hydraulic Oil Tank | Ltr | 80 | | |
| Drum Oil | Ltr | 5 | | |

STANDARD EQUIPMENT

Canopy with Sun Top, Cushioned Seat, Seat Belt, Rear View Mirror, Instrument Panel with range of Control Instruments including Hour Meter, Lights, Tool Box, Brake Warning Light, Neutral and Parking ON Indicator, RPM Gauge, Fuel Level Gauge, Dust Guard, LED Work Lights 3 Nos.

SAFETY FEATURES

Neutral Start Safety, Emergency Brake Switch, Reverse Alarm, Air Filter Clog Indicator, Hydraulic Filter Clog Indicator, Warning at Low Lube Oil Pressure, Low Engine Oil Pressure Indicator & Alarm, Hydraulic Oil Temperature Gauge, Battery Not Charging Indicator, Starter Safety Relay, Coolant Temperature Gauge & Indicator, Vibration Cutoff at Neutral Parking Brake Active Condition, Engine Stop at High Coolant Temperature, Over & Long Cranking Protection.

OPTIONAL FITMENT

Operator Cabin, Cold Starting Kit, Engine stop at Low Pressure, Compactobar with Frequency Meter, Intelligent Compaction System (ICS), Delay Start with Warning Alarm.

Note: Technical modifications reserved. All dimensions & weights are variable within ±2.5% over Indicated Values.